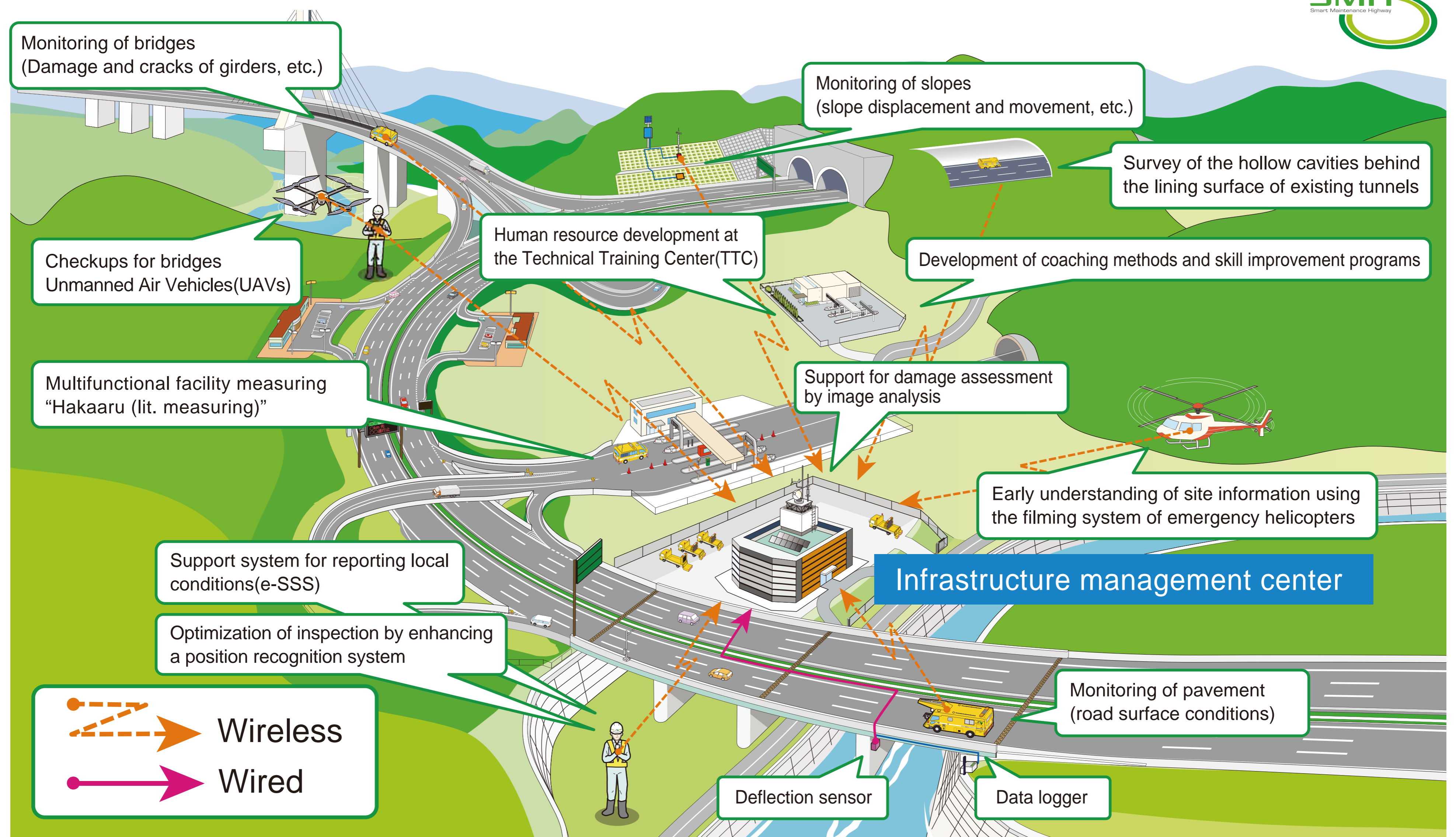


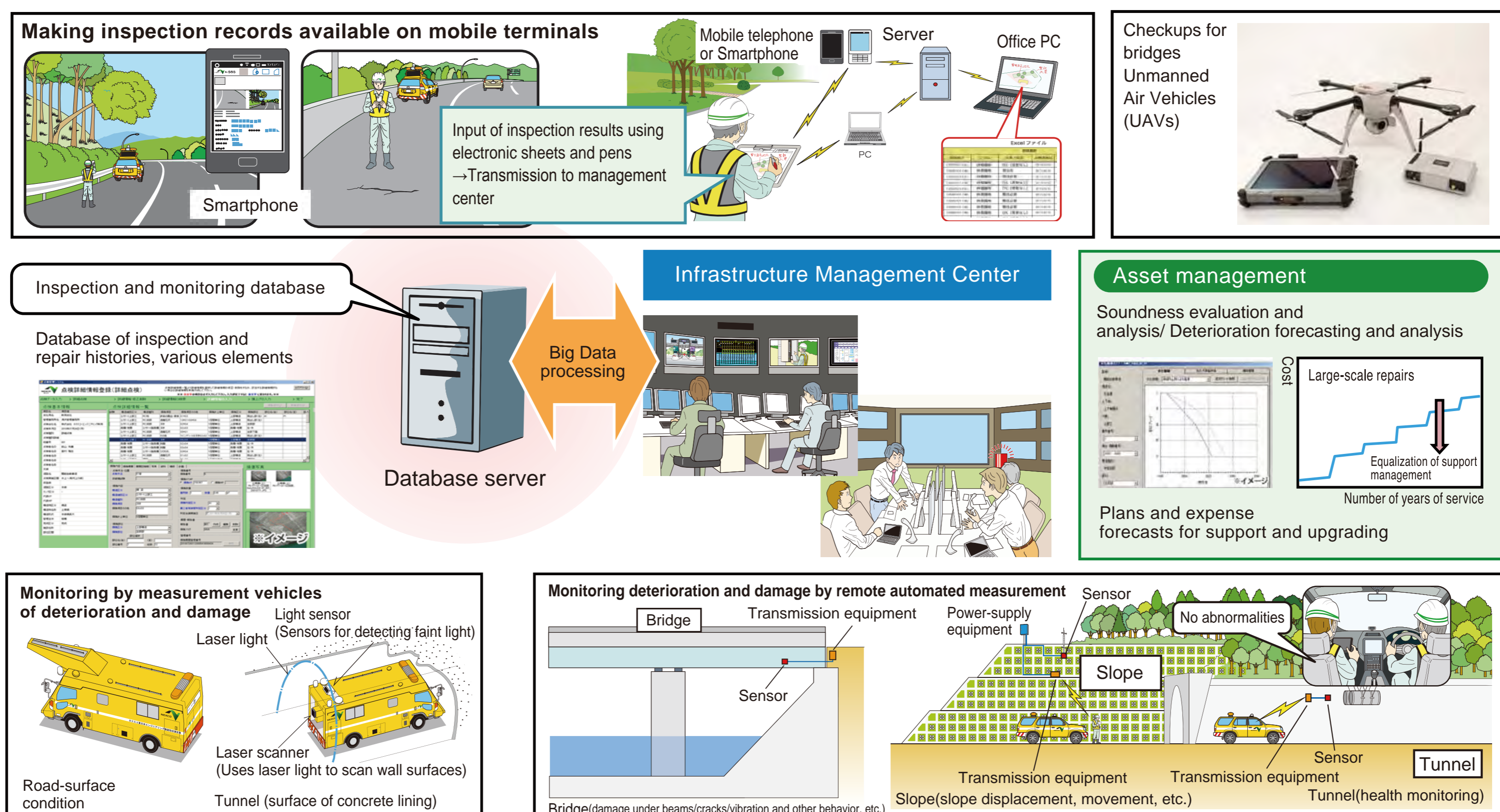
Expressway Maintenance - 3 Smart Maintenance Highway (SMH) Concept

고속도로 관리 - 3

스마트 정비 고속도로 (SMH) 컨셉



Schematic view of SMH concept upon completion



Schematic view of key ICT and links

1 What is SMH?

- The basic characteristic of an SMH is constant monitoring as the basis for solving a variety of problems in local infrastructure management.
- As part of this effort, to secure the long-term safety and security of road infrastructure, ICT and mechanization are introduced under the management of engineers to form a comprehensive maintenance framework. This framework streamlines, enhances and boosts the reliability of support management and upgrading.
- One aim is to introduce an infrastructure Management Center (tentative name) linked with the Road Traffic Control Center by FY2020.

2 Background

- Aging expressway assets (The Long-term Maintenance Examination Committee was formed in November 2012 and tabled its final report on January 22, 2014.)
 - Agencies at various levels (national, industrial, academic, etc.) launched into concerted deliberation in the wake of the Sasago Tunnel collapse on the Chuo Expressway in December 2012.
 - The year 2013 was positioned as "Year One for Infrastructure Maintenance," and the national government carried out a series of comprehensive measures on this front.
 - For the East Nippon Expressway Company, streamlining and enhancement of support management and upgrading have long been vital and urgent issues.
- ⇒ With this background in mind, Nexco East Japan is marshaling Company-wide resources to make the SMH concept a reality.