

# Road Heating Technology Using Heat-Generating Washi Paper

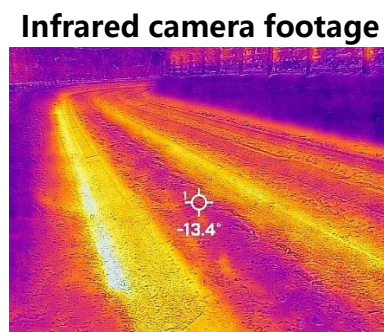
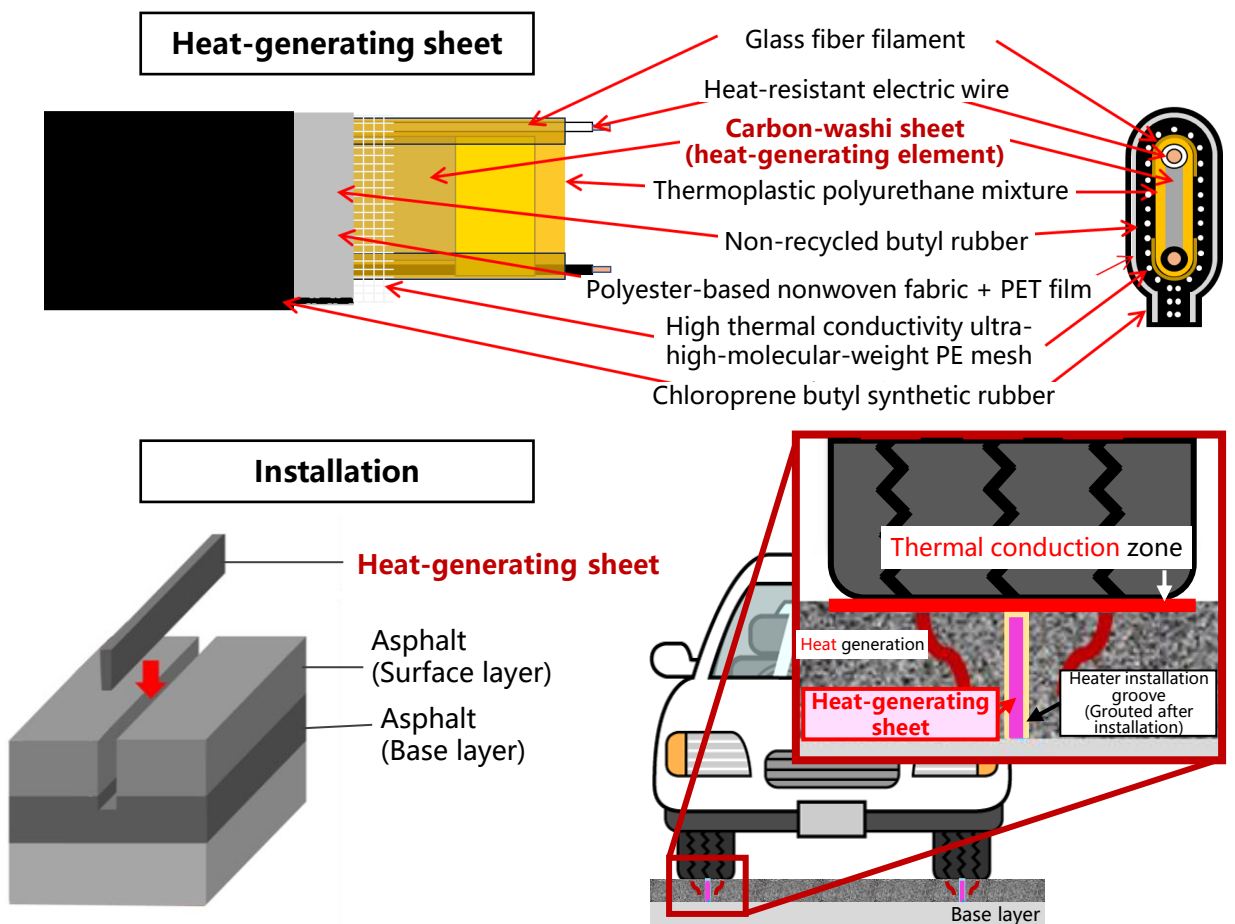
Technologie de prévention du verglas par chauffage routier utilisant du washi (papier japonais traditionnel)



A heat-generating sheet has a simple structure. It consists of a carbon-washi (Japanese Traditional paper) sheet sandwiched between waterproof sheets. The carbon-washi composite sheet can generate heat simply by supplying it with an electric current.

Washi-based heat-generating sheets can be easily installed by cutting several-millimeter-wide grooves on the pavement surface. These sheets can be installed on existing pavement surfaces, and the installation cost is lower than conventional technologies because they only need to be installed on wheel tracks. Electric power consumption, therefore, is significantly lower than in conventional methods.

The snow-melting performance and durability of the washi-based road-heating sheets have already been confirmed on roads, expressways, and parking lots in heavy-snow regions. The road-heating sheets have already been installed in three Metropolitan Expressway sections. They have proven effective in melting snow in winter.



Metropolitan Expressway Company Limited.  
<https://www.shutoko.co.jp/>  
 Shutoko Technology Center  
<https://www.tecmex.or.jp/>

