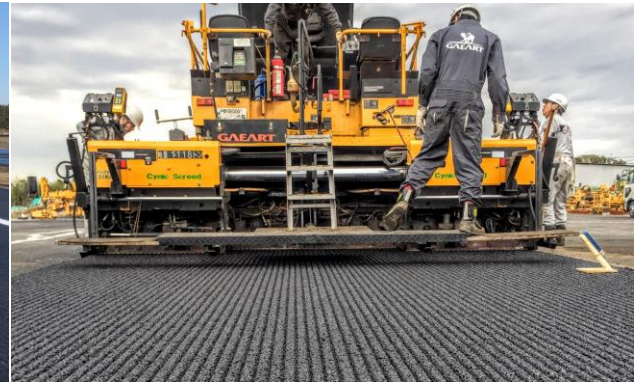


# Full Function Pave (FFP)

## Longitudinal Groove Rough Surface Hybrid Pavement

### Full Function Pave (FFP)

Revêtement hybride à surface rugueuse  
et à rainures longitudinales

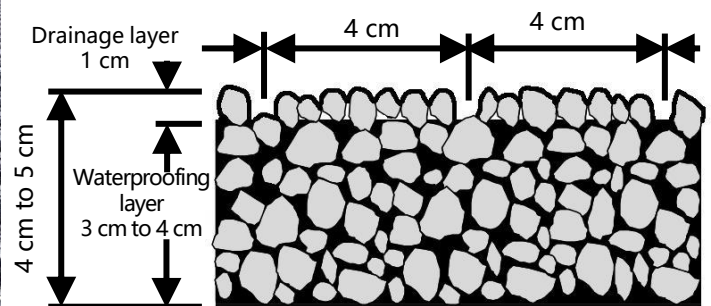


## Overview of the construction method

Full Function Pave (FFP) is a longitudinally grooved rough-surface hybrid pavement. Its hybrid structure, consisting of a drainage layer and a waterproofing layer, is formed within a single asphalt paving mixture during a single construction process. The pavement surface is finished into a longitudinally grooved rough surface by using an asphalt finisher equipped with a compaction device modified specifically for this application. Longitudinally grooved rough-surface finish enhances vehicle stability under wet weather and other difficult-to-drive conditions and contributes to other improvements, such as freezing prevention, noise reduction, and visibility improvement. FFP has also proved to be effective in reducing traffic accidents.



Example of longitudinally grooved rough-surface finish



FFP layer structure

### FFP mixture test criteria

Item	In-house criteria
Cantabro loss (-20° C) <sup>*1</sup>	(%) 12 or less
Permeability coefficient <sup>*2</sup>	(cm/sec) 1.0 x 10 <sup>-7</sup> or less
Dynamic stability (DS)	(cycles/mm) 6,000 or more

\*1: When used in a cold region; 20°C in other regions

\*2: Based on pressurized permeability test

### FFP surface properties criteria

Item	In-house criteria
Mean profile depth (MPD) of pavement surface	(mm) 1.2 or more
Seepage rate	(ml/15 sec) 800 or more <sup>*1</sup>
Skid resistance (BPN)	(BPN <sub>20</sub> ) <sup>*2</sup> 60 or more
Skid resistance (DF tester)	(μ) 0.25 or more

\*1: Equivalent to the seepage rate in drainage pavement with a porosity of 17%

\*2: Value corresponding to BPN at a surface temperature of 20°C

