

Stationary anti-freezing agent spreader Makiemon



Épandeur d'agent antigel stationnaire
Makiemon



Makiemon keeps winter roads safe around the clock.



Standard type
DSF020-3

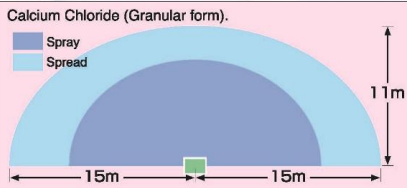


Compact type
DSF020-3C

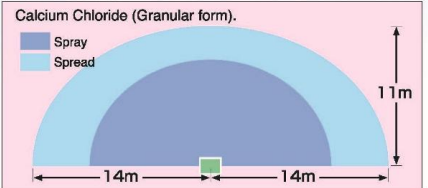
Spray range

- * The charts show the spray range of granular calcium chloride under windless conditions.
- * In the case of calcium magnesium acetic acid [CMA], the spray range is shortened.
- * The spray range changes according to the surroundings or installation conditions.

[DSF020-3]



[DSF020-3C]



Control panel

- The spray methods are separated into automatic spray mode and a manual spray mode.
- On the right side of the machine, there is a control panel. You can control both automatic and manual operations with this control panel.
- When switching the automatic mode ON, Makiemon starts to work at the specified time and temperature.
- At time of shipment, the timer is set at 4:00 - 6:00 and 17:00 - 20:00 and at an open air temperature of -3°C.
- You can select any time. You can choose up to 5 patterns simultaneously.
- Temperature can be selected for a range from +5°C to -20°C.
- You can also check Makiemon's past spray record to confirm previous time and temperature settings.



Standard type

Twin spinners

- Standard type : Both the left and right spinners revolve at a high speed and spray up to 11m forward and 15m to the left and right respectively when performing under windless conditions and when spraying calcium chloride [granular form].
- Makiemon can make use of both calcium chloride [granular form] and calcium magnesium acetate [CMA] [granular form].



Control box

- You can control both spray functions and a record of spray-function history with the control box. In case of error, an error-code is indicated on the control box.



Standard type

Battery

- Makiemon is constructed with a built-in battery to maintain efficient service cycles.
- When the battery is fully charged, Makiemon can work twice a day automatically and once more by hand, every day for 3 months. (However, it's in case there are no retry to spray by sensing any people or cars.)
- Makiemon has a built-in function with which you can check the machine's remaining battery power.



Hopper inside

- Both the standard and compact models have a hopper with a 0.2m³ capacity, the equivalent of 5 sacks of 25 kg anti-freezing agent. (When set to automatic spray twice a day and manual spray once a day, the anti-freezing agents must be re-filled at approximately 4 day intervals.)
- The mixer inside the hopper mixes the anti-freezing agents to spray uniformly.
- The hopper is made of FRP to prevent it from corroding.



Standard type

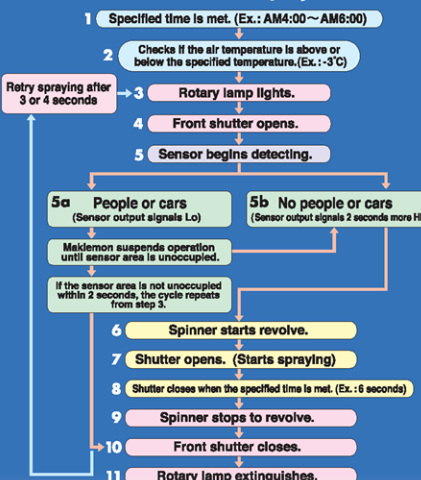
Option

Object sensor



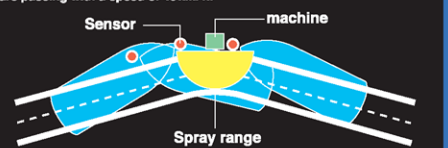
- The sensor is a device that detects occupying cars or people and suspends Makiemon's operation until the area is free of objects.
- Makiemon senses when cars or people no longer occupy the area and automatically begins operation. (Take note that once Makiemon's spray cycle has begun, sensor detection is suspended.)
- This sensor has a maximum range of 75m in length and 12m in width.

Flow chart for automatic spray and sensor



Standard operation

The following chart shows an example under the highest sensor settings of cars passing with a speed of 40 km/h.



Sensor (Specifications)

Model		KBS-005
Capability	Sensor method	Micro wave
	Range	75m (Maximum length) 12m (Maximum width) The range depends on the object size.
	Angle	Maximum angle ; 44° The angle depends on the object size.
Outer dimension	Width	97mm
	Height	55mm
	Depth	161.5mm
	Weight	320g
Input voltage		DC24V
Electric currency		Maximum of 0.3A
Parts (Attachment)		Pole, Parts to stabilize pole, Parts to stabilize sensor, Electric cable, (1.25X3cardsX15m), bolts and fixtures, Cable bands, Electric connector.

