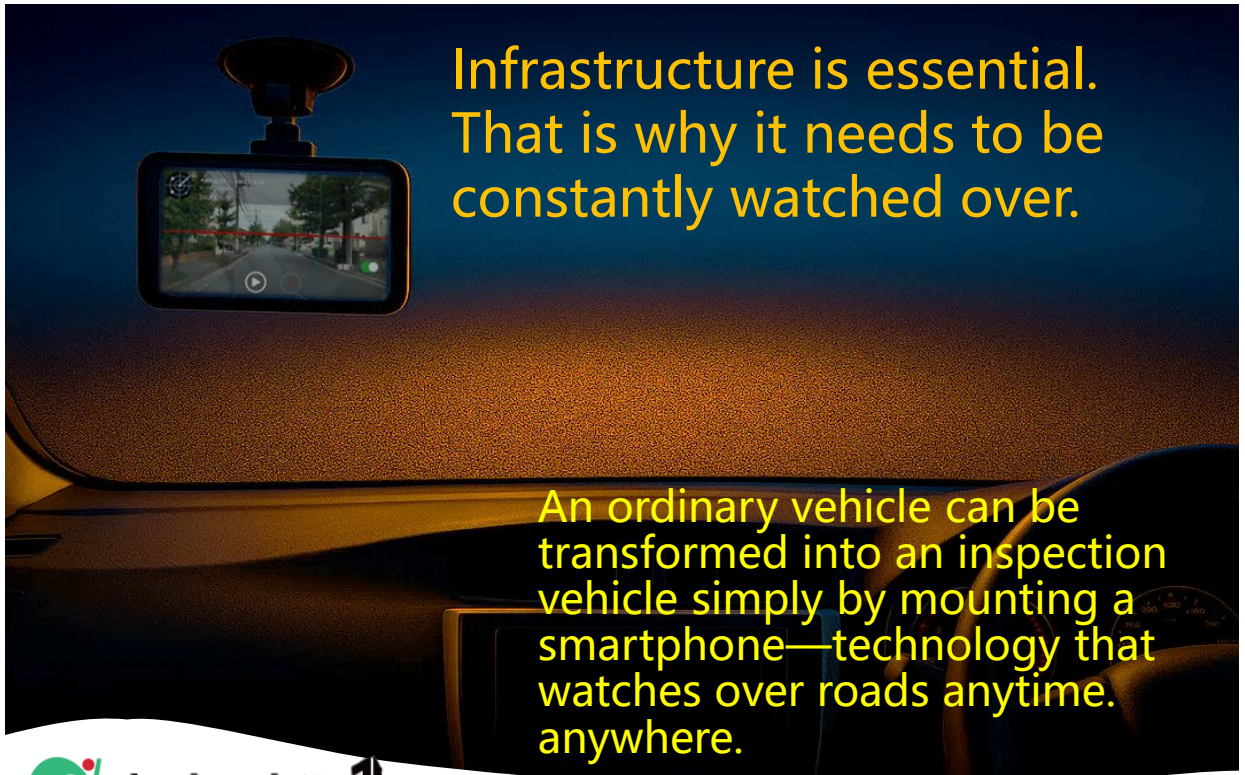


GLOCAL-EYEZ

GLOCAL-EYEZ



Overview

- GLOCAL-EYEZ makes it possible to check paved surfaces for signs of damage, such as cracks and level differences, by capturing images of paved roads with a smartphone mounted on an ordinary vehicle.
- GLOCAL-EYEZ is a DX-ready road management technology that integrates digital technologies including Internet communication and AI. With just a smartphone and a vehicle, anyone can perform low-cost inspections anytime, anywhere while supporting everything from day-to-day road management to the selection of repair methods.

Features

- Anyone can easily perform inspections simply by mounting a smartphone to an ordinary passenger car.
- Inspection data can be transmitted from the smartphone for AI analysis, with inspection results available in approximately one hour.
- Inspections can detect pavement problems, including cracks, potholes that hinder safe driving and level differences that often lead to complaints from road users and residents.
- Vast stretches of roads can be inspected efficiently.

(1) Launch the application. (4) Upload data.

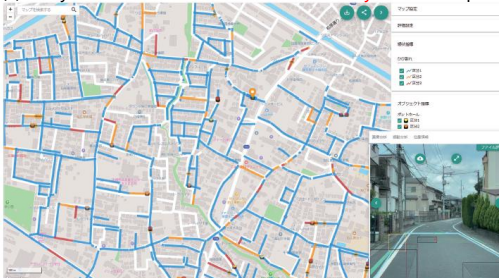


AI-assisted
automatic
analysis on a
cloud server

	Crack diagnosis category I (damage level: low)
	Crack diagnosis category II (damage level: medium)
	Crack diagnosis category III (damage level: high)
	Pothole location
	Level difference location



(2) Mount a smartphone. (5) Analysis results can be checked the same day from a computer.



Early detection of potholes during the snowmelt season

(3) Start/stop measurement.



Flow from inspection to analysis

* GLOCAL-EYEZ is a smartphone-based road inspection DX system developed by integrating Nichireki's pavement management and repair technologies with the AI-assisted road surface assessment logic developed by Prof. Tomonori Nagayama, Graduate School of Engineering, The University of Tokyo, and the AI and system technologies developed by SmartCity Research Institute, Co., Ltd.

