

# NEXCO-West's Initiatives to Strengthen Disaster Response Capabilities on Expressways - 1

## “Quick Recovery of Accessibility in the Event of a Disaster”

NEXCO-West et ses initiatives visant à renforcer ses capacités de gestion des catastrophes sur ses autoroutes - 1  
 “Rétablissement rapide de l'accessibilité en cas de catastrophe”



### 3. Challenges and solutions for securing access for emergency transport within 24 hrs

**Challenge 2**  
 • Securing temporal access for emergency service

(Emergency service)

※ Great East Japan Earthquake ( East Nippon Expressway Company Limited )

**Solution 2**  
 • Repair cracks in the road

Surveying Cracks    Filling with crushed stones    Finishing surface/paving

**Solution 1**  
 • Securing temporal passage over steps by installing sandbags and steel plates



**Solution 3**    Cooperation with organizations at same stake  
 • Joint training with organizations at same stake

NEXCO Maintenance team (In Orange)  
 Police officers (in Blue)  
 Police vehicles    Firefighters

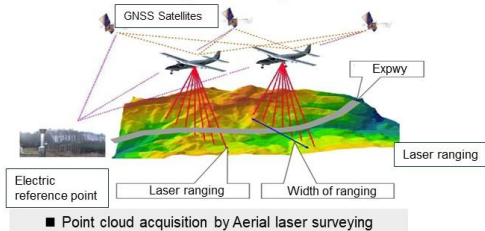
Correcting steps with sandbags

Driving over temporal pass covering steps

### 4. Challenges and solutions for ensuring access to the public within one week

**Issue : Safe and appropriate emergency recovery**

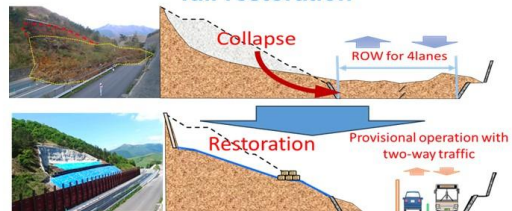
**Solution 1 : Acquisition of detailed survey data by Laser profiler (LP)**



**Solution 2: Detailed investigation and recovery planning by internal and external experts**



**Solution 3: Securing 2 lanes for provisional operation with using 4lanes width until full restoration**



■ Operating with **provisionally lowered rainfall standard for road closure** until completion of full restoration work and countermeasures. **Inform the public of the temporary operation** and **promote public awareness of the operation.**

### 5. Incident Response Drills and Review of Past Disaster Events

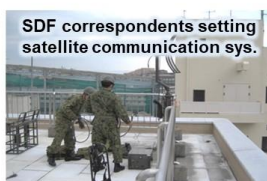
■ Conduct “ joint drills with stakeholders”



“DIG: Disaster Imaging Game” simulation by various stakeholders

【Typical subjects in joint drill】

- Update of *communication protocol*
- How to use emergency access
- Emergency response
- Recovery scenario



Joint drill :Establishing Com. Link network

■ Review of past disasters and improvement of operation

Review of “2016 Kumamoto Earthquake”

