

Advanced Technologies of Honshu-Shikoku Bridges

- Long-span bridges for more than 200 years -
Technologies de pointe des ponts Honshū-Shikoku
- Ponts à grande portée conçus pour une durée de vie de plus de 200 ans -



Maintenance Technologies for Long-span Bridges

Inspection technology

Advanced tools help to streamline the bridge inspection works, especially for cables and steel components.



Main cable inspection



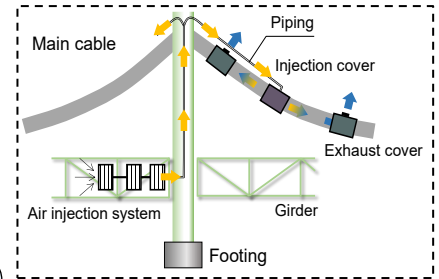
Suspender rope inspection



Tablet app with BIM & MR

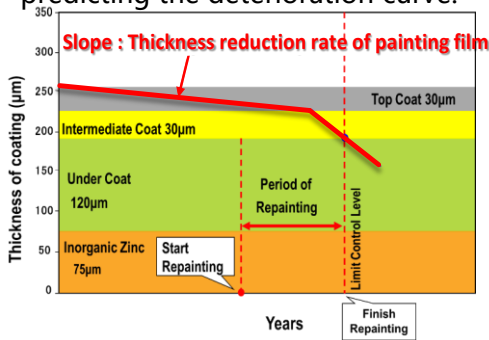
Cable dehumidification system

Corrosion is prevented in the main cables by injecting dehumidified air into them



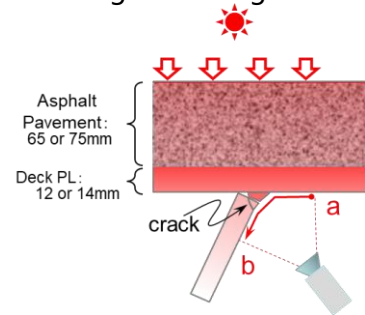
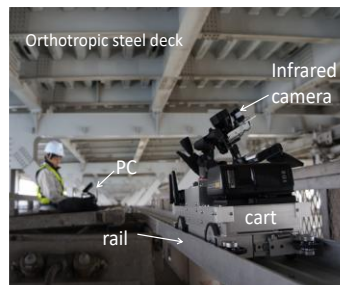
Coating maintenance system

For efficient maintenance of coating, HSBE has been investigating the thickness reduction of coating and predicting the deterioration curve.



Fatigue crack detection technology

It is a fatigue crack detection technology for orthotropic decks that measures the temperature difference between the deck plate and trough rib. Cracks can be detected remotely without removing the coating.



Technical Assistance for Long-span Bridges

- Technical Advice for Construction & Maintenance
- Dispatch of Engineers to Bridge Construction Sites
- Seminars on Maintenance for Bridge Engineers

Technical Advice for Tsubasa Bridge (Cambodia)



Technical Advice for Matadi Bridge (Democratic Republic of the Congo)



Seminars on maintenance of long-span bridges

