

# Roadway Natural Stone Paving Method Inject Method

Procédé de construction de chaussées en pierres naturelles  
Méthode par injection



## Stone pavement capable of withstanding heavy vehicle loading

Cement asphalt mortar (CA mortar), which has excellent flowability and post-hardening impact absorption, is injected into paving block joints to fill both the crushed-stone spacer layer under the paving blocks and the joints along the four sides of each block.

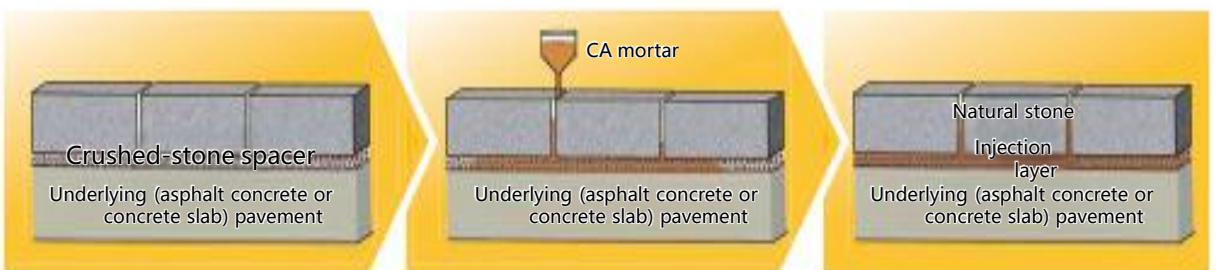
This method effectively restrains the five faces of each block, resulting in block pavements with excellent flexibility and impact absorption under impact loads induced by passing vehicles.

### Features

- Long-term durability to withstand heavy vehicle loading
- A wide range of applications, ranging from large-scale new pavement to repairs of existing roadways
- Asphalt pavement suffices as the underlying pavement.

### Construction procedure

- (1) CA mortar is injected into the joints of (blocks temporarily placed on the crushed-stone spacer layer.
- (2) The voids in the crushed-stone spacer layer are filled, and the joints are filled to at least half of the block thickness.
- (3) Face joint material is injected until the joints are filled close to the surface level for finishing.



- The thickness of the injection layer is 3 cm, which is required to ensure the accuracy of the stone installation.
- Since the CA mortar injected into the joints is extensible, extension joints are not provided.
- Depending on construction conditions, injection into face joints may be carried out after opening the road to traffic.

### Examples of construction

■ Area near a bus stop  
(Oita Prefecture)



■ Area near an LRT track  
(Toyama Prefecture)



■ Tourist area  
(Kyoto Prefecture)



■ Shopping mall  
(Kanagawa Prefecture)

