

# Inspection Support Technology Performance Catalog (Bridges)

Catalogue des performances techniques d'aide à l'inspection (ponts)



## Organizations responsible for promoting the deployment of new technologies

For promoting the introduction of new technologies, the Road Bureau of MLIT selects third-party institutions (deployment promotion organizations) for tasks—such as technological validation necessary for assuring new technologies—to be carried out in cooperation with the national government.

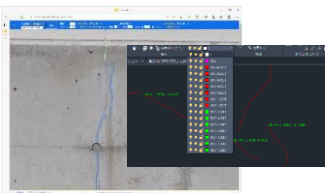
JBEC has been designated by MLIT as an institution to promote the deployment of "bridge inspection support technologies." Specifically, JBEC is assisting in formulating inspection support technology performance catalogs.

## Inspection support technology performance catalogs

Performance catalog are documents that can be used as a reference for entities who want to use inspection support technologies. The catalogs They are useful in comparing and reviewing different equipment and devices.

| Catalog classification                  | Description  | Number of entries (April 2025) |
|---|--|--------------------------------|
| Image measurement technologies          | Technologies by imaging or measurement bridge elements, techniques for processing image data and preparing documents | 61                             |
| Non-destructive inspection technologies | Technologies for sensing and measuring defects of structures by non-destructive inspection                           | 31                             |
| Measuring/monitoring technologies       | Technologies for structural sensing or monitoring  | 53                             |
| <b>Total</b>                            |  | <b>145</b>                     |

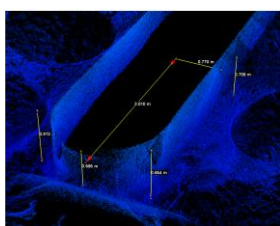
## Example of applications of inspection support technologies



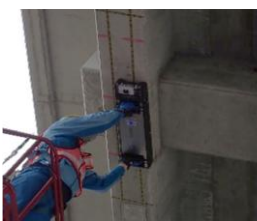
Automatic crack detection and mapping



Imaging using a cable robot



Substructure/river bed profiling using sonar



Steel rupture detection using magnetism

## Validation of performance



Testing using a test bridge (Fukushima Robot Test Field)



Wind tunnel test (Fukushima Robot Test Field)



Testing using a specimen (National Institute for Land and Infrastructure Management)

