

# High-Performance Pavement Repair Materials

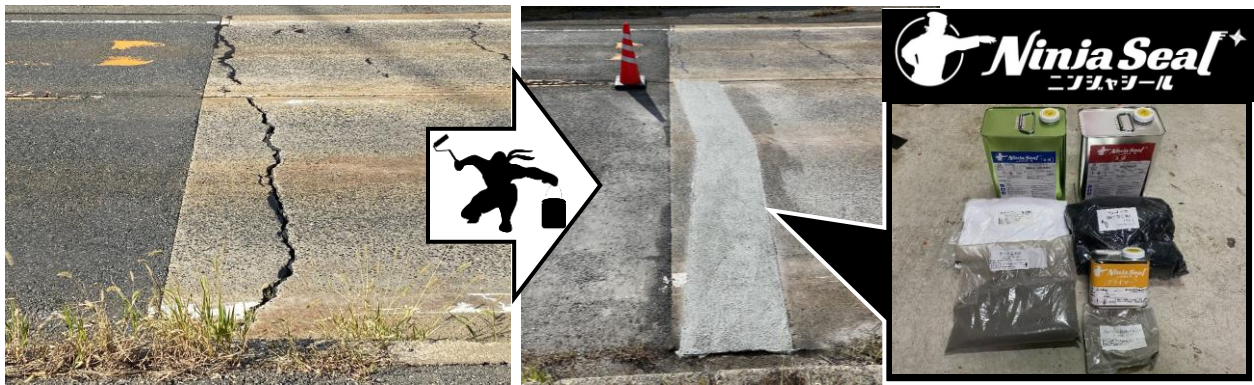
- Cold-Mix Pavement Repair Materials -  
Matériaux haute performance pour la  
réhabilitation des chaussées
- Matériaux de réhabilitation des chaussées à froid -



## Ninja Seal

Cold-mix concrete repair material

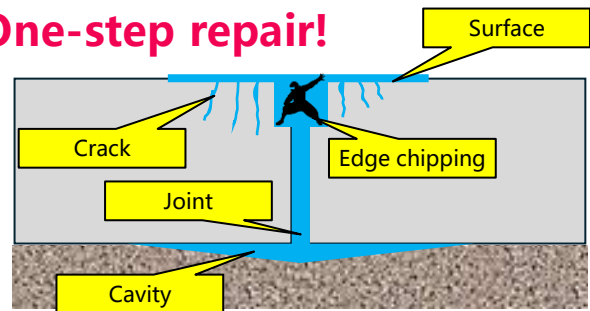
Ninja Seal is a resin-based, cold-mix repair material developed as a solution to concrete pavement repair problems, such as joint edge chipping, cracking, steps, and water intrusion.



### Features

- Use of soft and flexible material with an elongation of 300% or more
- The strength measured by load testing is at least 80% of the concrete strength on the upper surface and at least 105% on the lower surface.
- High flow resistance and wear resistance

### One-step repair!



## Forest Patch

All-weather asphalt repair material

### An all-weather, water-activated cold-mix asphalt repair material!

### Features

- Simple procedure: Spread the material at the repair location, sprinkle water, and compact.
- Repair can be made at ambient temperature. No specialized skills or equipment required.
- The repaired surface can be opened to traffic immediately after application. No need to worry about damage such as fretting and spalling.
- Repair can be made even in wet conditions, such as rain and water puddles.

