



Second Announcement

REAAA Conference
Goyang 2025

Future Roads; Hyper-connection

OCTOBER 26-31, 2025
KINTEX 2 Exhibition

Conference Hosts



In October 2025, the "REAAA Conference Goyang 2025" will be held in Goyang, Republic of Korea. The host country, Korea, has been one of the fastest-developing nations over the past 50 years. It successfully hosted the REAAA Conference in 2009 (Incheon) and the World Road Congress in 2015 (Seoul).

The Republic of Korea is a dynamic country where tradition meets innovation. Known for its rich history, vibrant culture, and cutting-edge technology, it offers a unique blend of the past and future. Visitors can explore historic palaces in Seoul, stunning natural landscapes like Jeju Island, and indulge in world-famous Korean cuisine. As a global leader in industries like electronics and entertainment, Korea is the birthplace of K-pop and Korean dramas that captivate audiences worldwide. Its warm hospitality and efficient infrastructure make it an unforgettable destination for travelers.

Goyang, located just northwest of Seoul, is a vibrant and modern city known for its excellent accessibility and quality of life. It boasts key attractions like Ilsan Lake Park, one of the largest artificial lakes in Korea, and KINTEX, a premier exhibition and convention center. Goyang is also a hub for innovation, with thriving industries in technology and media. The city offers a perfect blend of urban convenience and natural beauty, making it an ideal place to live and visit. Additionally, its proximity to Seoul and well-developed infrastructure make it a gateway to Korea's culture and economy. We invite you to join the REAAA Conference Goyang 2025 and engage with road technology experts from around the globe. Your active participation will serve as a valuable contribution to this significant event.

About REAAA Conference Goyang 2025

- **Title** REAAA Conference Goyang 2025
- **Dates** October 26 - 31, 2025
- **Venue** KINTEX 2 Exhibition Hall, Goyang
- **Theme** Future Roads: Hyper-connection

- **Hosted by**  Korea Expressway Corporation **Goyang**
- **Organized by**  Korea Road Association
- **Supported by**  Ministry of Land, Infrastructure and Transport
- **Language** English

REAAA Conference Goyang 2025

**Future Roads;
Hyper-connection**

What is the REAAA Conference?

The Road Engineering Association of Asia & Australasia (REAAA) conferences have evolved into a premier regional platform for presenting research findings, discussing, and exchanging ideas on innovative and cutting-edge technologies related to the development, construction, management, and maintenance of roads, highways, and related infrastructure. Held every two to four years by the country of the REAAA President, these conferences are highly anticipated by professionals involved in financing, designing, constructing, and maintaining road and transportation engineering projects.

The 2025 conference will be the 17th in the series and will take place in Goyang, Republic of Korea. This follows successful past conferences in cities such as Bangkok (1976), Manila (1978 & 2006), Taipei (1981 & 1995), Jakarta (1983), Adelaide (1986), Kuala Lumpur (1990 & 2013), Singapore (1992), Wellington (1998), Tokyo (2000), Cairns (2003), Incheon (2009), Bali (2017), and On-line (2021). This will be the second time the Republic of Korea hosts the REAAA Conference, with the first being in Incheon in 2009.

Schedule

TIME	October 26 (SUN)	October 27 (MON)	October 28 (TUE)			October 29 (WED)					October 30 (THU)				October 31 (FRI)							
09:00 -10:00	PIARC National Committee Meeting	PIARC Technical Committee 1.3 Meeting PIARC Council Meeting	PIARC Technical Committee 1.3 Meeting PIARC Council Meeting	On-site Registration	IRF Asia Pacific Regional Congress	ROTREX 2025	Korea-Germany Bilateral Meeting	Technical Sessions	IRF Asia Pacific Regional Congress	PIARC TC Seminar	ROTREX 2025	Technical Visit/Cultural Visit	Plenary session 2	124 th REAAA Council Meeting	Technical Sessions	IRF Asia Pacific Regional Congress	ROTREX 2025	Technical Visit/Cultural Visit	REAAA General Meeting	125 th REAAA Council Meeting	Korea-Indonesia Road Conference	Technical Visit / Cultural Visit
10:00 -11:00																						
11:00 -12:00																						
12:00 -13:00																						
13:00 -14:00	Lunch																					
14:00 -15:00	PIARC National Committee Meeting	PIARC Technical Committee 1.3 Meeting PIARC Council Meeting	PIARC Technical Committee 1.3 Meeting PIARC Council Meeting	Opening Ceremony	Technical Sessions	ROTREX 2025	Special Sessions	Business Forum	Technical Sessions	IRF Asia Pacific Regional Congress	PIARC TC Seminar	ROTREX 2025	Technical Visit/Cultural Visit	HORA Meeting	Technical Sessions	B2B Sessions	IRF Asia Pacific Regional Congress	ROTREX 2025	Technical Visit/Cultural Visit	Closing Ceremony		
15:00 -16:00																						
16:00 -17:00																						
17:00 -18:00																						
18:00 -			Welcome Reception										Gala Dinner									

* The event schedule is subject to change.

REAAA in Brief



The REAAA was established by road and traffic experts from the Asia and Australasia region in 1973. Its permanent Secretariat is currently located in Shah Alam in the suburbs of Kuala Lumpur.

The objectives of REAAA are to promote the science and practice of road engineering and related professions in the Asia Pacific region through developing professional and commercial links within and between countries in the region. The association's long-term vision is to be the most effective regional organization, providing members with an avenue for sharing and transferring of technology towards promoting a better future in road-related engineering, with regional and technical cooperation as its underlying principles.

Currently REAAA, which has local chapters in Malaysia, Brunei, Korea, the Philippines, Australia and New Zealand, has a total of 182 institutional members and 1,720 individual members from 36 countries in its register.

PIARC in Brief



The World Road Association (PIARC), founded in 1909, is a global organization committed to improving road and road transport systems worldwide. It provides a unique platform for the exchange of knowledge, policy, and best practices among public and private stakeholders in the road and mobility sectors.

PIARC's mission is to promote international cooperation and support progress in key areas such as road safety, infrastructure resilience, sustainable mobility, and intelligent transport systems. The Association operates through Technical Committees and Task Forces made up of experts from around the world who produce practical and evidence-based resources.

With 128 government members and thousands of individual and collective members from over 140 countries, PIARC helps ensure inclusive access to knowledge across both developing and developed regions.

For more information, visit: www.piarc.org

IRF in Brief



The International Road Federation (IRF) is a global not-for-profit organization, headquartered in Washington, D.C. since 1948, and supported by a network of regional offices around the world. IRF serves a broad community of public and private sector members in more than 118 countries, offering a global platform for knowledge exchange, capacity building, and policy dialogue in the road and mobility sector.

IRF provides world-class knowledge resources, advocacy services, and continuing education programs that collectively create a global marketplace for best practices and industry solutions. Its mission is to promote safer, more sustainable, and efficient road and transport systems through innovation, training, and strategic partnerships.

With a strong focus on key areas such as road safety, digital transformation, asset management, infrastructure resilience, and sustainable financing, IRF empowers stakeholders to implement effective and future-ready mobility solutions.

For more information, visit: www.irf.global

Main Event

Official Event

Opening Ceremony(October 28)

Announce the conference theme and kick off the event

Welcome Reception(October 28)

Facilitate networking among participants

Gala Dinner(October 30)

Commemorate the event and connect with attendees

Closing Ceremony(October 31)

Review achievements and highlight key takeaways

REAAA General Meeting & Council Meeting

The 17th REAAA General Meeting, along with 124th and 125th Council Meetings, will be held to strengthen international cooperation and share advanced road technologies and policies among Asia-Australasia nations. The YEP meeting will be held concurrently to foster young road professionals, and the HORA meeting will be held to bring road agency leaders together.

PIARC Annual Meeting

The Council Meeting, National Committee Meeting, and Technical Committee Meeting of the PIARC, a leading international organization in the road and transport sector, will come together. These meetings will strengthen international cooperation in road technology and provide a platform to discuss future road policies and operational strategies.

IRF Asia-Pacific Regional Congress

Modern Roads, Modern Solutions: Safety, Technology & Sustainable Investment

Join us for the 6th IRF Asia-Pacific Regional Congress, which will be held alongside the REAAA Conference Goyang 2025. This premier gathering aims to transform road and mobility networks with a strong focus on road safety, pavement advancements, and innovative funding mechanisms, including road user charging. Building on the event's overarching goals of sustainability and resilience, this edition highlights the transformative power of digital technologies in enhancing safety, extending pavement life, and enabling sustainable financing models.

With the theme 'Driving Innovation for Safer and Sustainable Roads,' the Congress will bring together professionals from various sectors to share insights, solutions, and cutting-edge research that will shape the future of road networks and mobility.

Exhibition(ROTREX 2025)

During the REAAA Conference, ROTREX 2025, the largest road and transport exhibition in Korea, will take place. This exhibition offers opportunities for companies to showcase advanced products to international government officials, organizations, and businesses. Additionally, a business-oriented matching program will be organized to help participating companies explore international markets and connect with overseas buyers.

Academic Symposium



Special Session

The Special Session will enable active technology exchanges among domestic and international road experts, focusing on future roads and hyper-connected technologies.

Plenary Session

The Plenary Session will explore new technologies for advancing national road systems, with key speakers facilitating discussion on future road innovations.

Technical Session

The Technical Session will facilitate research exchanges and technological cooperation in road technology across Asia and Pacific, featuring 250 papers across 13 fields.

Other Events



Ministerial Session

Discussions on the future of road technology will be held with ministers and vice ministers from various countries, focusing on identifying future policy agenda and laying the groundwork for the forthcoming era of hyper-connected roads.

Bilateral Meeting (Germany, Indonesia)

Bilateral Meeting (Germany, Indonesia) will bring together high-level officials and experts to enhance G2G cooperation.

Business Forum

The Business Forum will share knowledge in the road sector and strengthen partnerships, featuring participation from government representatives, businesses, academia, and research institutions.

B2B Session

The B2B session is a platform designed to showcase exceptional products, systems, technologies, and more for business-to-business interactions. It provides valuable opportunities to promote business among domestic and international participants and enterprises.

Additional Events

Technical Visit

Experience Korea's advanced road technologies through programs organized with public and private companies and research institutions.

Cultural Visit

Conference participants can explore Korea's traditional culture and unique destinations through a high-quality cultural program.

Honors & Awards

KATAHIRA Award

The Katahira Award was established in January 1991 in memory of the late Dr. Nobutaka Katahira from Japan who was the President of the Road Engineering Association of Asia and Australasia (REAAA) during the Fifth Council Term from 1983 to 1986. Dr. Katahira bequeathed three (3) million yen to REAAA towards encouraging keen participation among young engineering professionals in the promotion and advancement of science and technology in road development and road related engineering by way of writing, publishing and presenting technical papers.

The Katahira Awards will be awarded to outstanding technical papers relating to the road industry presented at the 17th REAAA Conference by young professionals. The winning entry/entries will receive cash award/s and certificate/s.

Among the terms and conditions of eligibility for the Katahira Awards are:

- The author must be below 40 years of age at the point of submission of paper/s. If there is more than one (1) author, only the author/s below 40 years of age is/are eligible.
- The author/s must be either ordinary/associate member/s or employee/s of institutional member/s at the point of submission of paper/s.
- Technical papers published elsewhere in the same format will not be accepted.

Abstracts selected to submit the subsequent full technical papers will be evaluated for the Katahira Awards.

REAAA Mino Best Project Award

The Mino Best Project Award was established in 2016 to recognise outstanding road and/or bridge projects which have recently been constructed in the Asian and Australasia region. The Mino fund was donated by the late Mr Sadamu Mino, who was the Association's 10th President from 1998 to 2000.

An Inaugural Mino Best Project Award was presented at the Closing Ceremony and Gala Dinner on 23rd March 2017 in conjunction with the 15th REAAA Conference in Bali, Indonesia by DR. A.Hermanto Dardak and Mr. Katsugi Hashiba.

The winning projects were selected from 6 entries proposed and submitted by REAAA Council Members. Panel and judges were nominated and selected among REAAA Council Members and evaluation been carried out based on specific criteria agreed by the panellist.

Sumitomo Mitsui Construction Co., Ltd has contributed the amount of USD3,000 to support the Mino Best Project Award. Financial assistance from the sponsor provided for trophies, plaques and certificates for the winners.

REAAA Hwang Award

The REAAA Hwang Award was established with the generous support of an Honorary Member, Mr. Hwang Kwang-ung, who is also a Co-opted Council Member of the Road Engineering Association of Asia and Australasia (REAAA). It recognizes any REAAA member who has made a significant contribution to the development of the road sector and regional cooperation in the region.

The first Hwang Award is presented during the 16th REAAA Conference in September, 2021. Four prominent members were nominated from four member countries. After the deliberate consideration, the Hwang Fund Committee selected two members as the winners are Tan Sri Dato' Ir. Dr. Wan Abdul Rahman bin Wan Yaacob from Malaysia and Mr. Kieran Sharp from Australia with the REAAA Governing Council's endorsement at the 113th Council Meeting, Nov. 2020.

During the 16th REAAA Conference, the award ceremony was held to celebrate the winners and their achievements. The second REAAA Hwang Award will be presented at the Closing Ceremony of the 17th REAAA Conference to be held this year.

REAAA Smart Highway Award

The REAAA Smart Highway Award was established to recognize outstanding achievements in the application of smart technologies in highway operation and management in the Asia and Australasia region. In response to the rapid development of technologies such as AI, 5G, Big Data, and IoT, this award aims to promote innovation and excellence in the implementation of intelligent transport systems.

The establishment of the award was proposed by the China Road Federation (CRF), a Council Member of REAAA, and approved at the 119th REAAA Governing Council Meeting. The award is sponsored by the Far Eastern Electronic Toll Collection Company (FETC), a corporate member of CRF.

The objective of the award is to acknowledge REAAA member organizations that have made remarkable contributions in developing and implementing smart highway management systems. It also aims to encourage the sharing of best practices and to foster the integration of smart technologies in the road engineering sector.

Eligible applicants must be institutional members of REAAA who have completed a relevant project within the past four years. Each application must be supported by a letter of recommendation from a current REAAA Council Member and include written consent from the project owner.

Projects will be evaluated by a panel of judges appointed by the REAAA Governing Council based on the following criteria:

- Originality and innovation in the application of ICT
- Development of new or creative technologies, services, or business models
- Demonstrated success of the solution or service
- Contributions to social, economic, and environmental sustainability
- Innovation in Big Data utilization
- System reliability and operational efficiency
- Effectiveness in maintenance improvement
- Support to emerging industry growth
- Enhancement of safety and efficiency in road operations
- Contributions to energy saving and carbon reduction

The winner will receive a prize of USD 20,000 (inclusive of any applicable taxes and charges), along with a commemorative plaque.

The inaugural REAAA Smart Highway Award will be presented at the Closing Ceremony of the 17th REAAA Conference to be held in 2025.



Full Paper Submission

All authors of accepted abstracts for both oral presentations and posters must submit their full papers for review. Full papers should be uploaded in Word format through the My Page by logging into the conference website. Only accepted full papers will be eligible for presentation during the technical sessions at the REAAA Conference Goyang 2025.

Important Dates

**March 14
2025**

Deadline of
Abstracts
Submission

**March 29
2025**

Notification of
Abstracts
Acceptance

**June 30
2025**

Deadline of
Submission
of Full Papers

**July 31
2025**

Notification of
Full Papers
Acceptance

Template

Please ensure that your submission follows the specified format by downloading and using the template provided. Refer to the guidelines below for important details.

- The full paper must be 6 to maximum 8 A4 pages in MS Word format.
- The designated font is Times New Roman. Please refer to the template file for details such as size and other specifications.
- The file size should not exceed 20MB.
- Graphics, pictures, and other non-text elements can unnecessarily increase the file size. To avoid this, graphics must be prepared at the right size and color depth before including them in the final document.

Notices

- Only accepted full papers will be published for academic purposes during the conference on the website.
- All submitted papers must be original and not previously submitted to any other conference or journal.
- When the full paper is accepted, the presenting author for either oral presentations or posters is eligible to register as a speaker at a discounted fee.

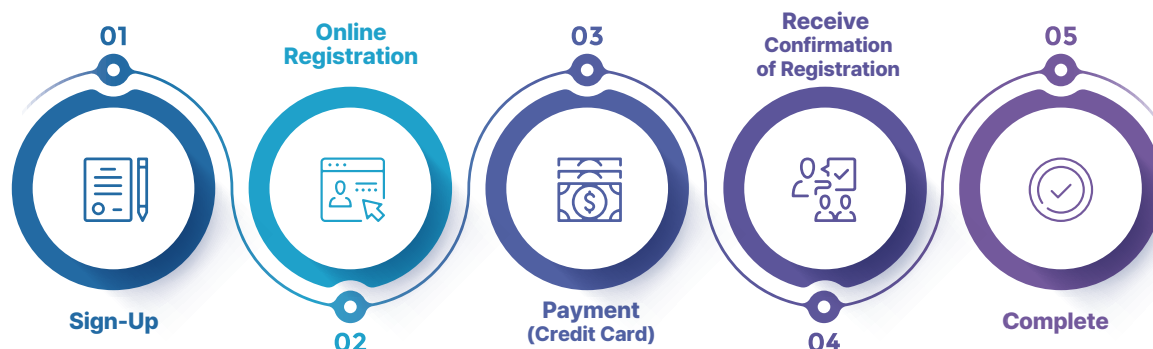
For any difficulties in submitting your full paper, please contact the Academic Team via e-mail (academic@reaaakorea2025.org).

Disclaimer

The invitation to submit an abstract / full paper does not constitute an offer to pay travel, accommodation or registration costs associated with the conference. By submitting an abstract, you will be granting the Organizing Committee permission to publish the abstract and the subsequent full paper in the Conference Proceedings.

Registration

Registration Process



A Confirmation of Registration will be sent after your payment is completed. If you do not receive it, please contact the Registration Team via email at (regi@reaaakorea2025.org).

Registration Fee

Category	Early Bird (Mar 1 ~ Jun 30, 2025)	Regular (Jul 1 ~ Sep 30, 2025)	Walk-in
Members	850 USD	950 USD	1,100 USD
Non Members	950 USD	1,100 USD	1,300 USD
Speakers	700 USD		
Students	500 USD		
Daily Rate	500 USD		
Accompanying Person	450 USD		

- **Members** : This category is for members of REAAA, PIARC, and IRF. Each organization will provide a promotion code to its members as proof of membership. Those who receive the code can register under the "Members" category by entering it on the registration page.
- **Speakers** : Only presenting authors for technical sessions are eligible for Speaker category with a discounted fee.
- **Students** : This category is for currently enrolled students (including graduate students). A copy of a valid student ID or an enrollment certificate issued within the last three months is required when registering.
- **Daily Rate** : This category allows participants to select a single day of attendance between October 28 (Tuesday) and October 30 (Friday).
- **Accompanying Person** : This category is for individuals accompanying participants. Only Members, Non-Members, and Speakers can register accompanying persons in addition to their own registration.
- **Group Registration** : A dedicated promotional code offering a 10% discount on registration fees will be provided for group registrations of 30 or more participants. please contact the Registration Team via email at (regi@reaaakorea2025.org).
- **Complimentary Registration Code Recipients** : One First Delegate from each PIARC member country, REAAA Council Members, and staff members of the PIARC and REAAA Secretariat.
- **Cancellation and Refund** : Cancellations made by Tuesday, September 30, 2025, will be refunded after deducting a processing fee. No refunds will be issued for cancellations made on or after Wednesday, October 1, 2025.

Cancellation and Refund Policy

- Cancellation must be notified to the Registration Team in writing by e-mail (regi@reaaakorea2025.org).
- Refunds will be processed after receiving a cancellation request. All administrative fees will be deducted from the refunded registration fee.
- Note that any administrative fees related to the refund will be paid by the registrants.

Registration includes

Your registration fee includes		Members, Non-Members, Speakers	Daily Rate	Students	Accompany Person
Sessions	Admission to All Sessions	Y	Y	Y	-
Events	Opening & Closing Ceremony	Y	Y	Y	Y
	Welcome Reception	Y	Y	Y	Y
	Coffee Break	Y	Y	Y	Y
	Admission to Exhibition Hall	Y	Y	Y	Y
	Gala Dinner	Y	-	-	-
Conference Kit	Guide Book	Y	Y	Y	-
	Guide Book for Exhibition	Y	-	-	-
	Souvenir	Y	-	-	-
Visit	Technical Visit	Y	-	-	-
	Cultural Visit	Y	-	-	Y

Exhibition Participation



ROTREX 2025 (International Road & Traffic Expo)

'ROTREX 2025' will be held in conjunction with the REAAA Conference Goyang 2025, a premier gathering of over 5,000 road technology professionals from more than 70 countries. The event will serve as a dynamic platform for exchanging insights, addressing current challenges, and shaping the future of road infrastructure. You can find more detailed information on the ROTREX website(road-trafficshow.com).

SHOW PROFILE

• Title	ROTREX 2025 (INTERNATIONAL ROAD & TRAFFIC EXPO)	• Organized By	Korea Road Association & KINTEX
• Date	2025.10.28.(Tue)~30.(Thu)	• Expected Scale	130 Exhibitors, 310 booth
• Venue	KINTEX 2 Exhibition, 7A Hall		

EXHIBIT ITEMS

ROAD CONSTRUCTION
& MAINTENANCE

ROAD SAFETY

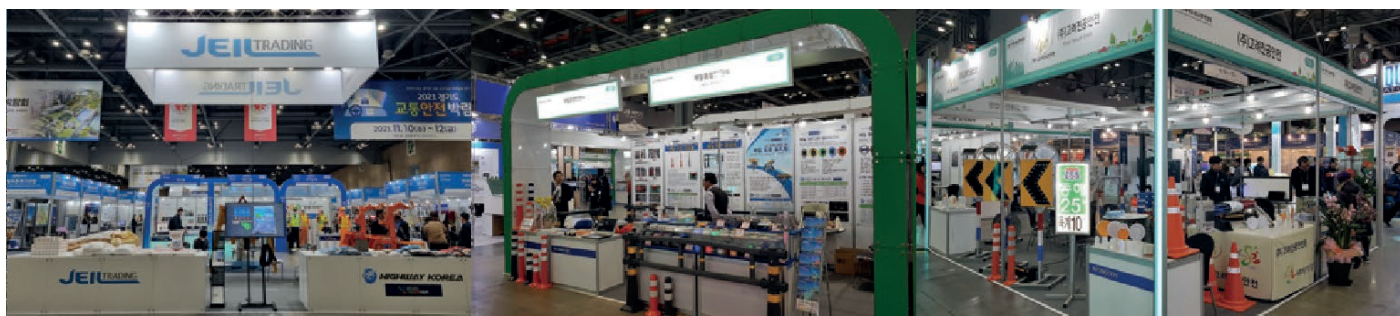
SMART MOBILITY

ITS

PARKING & LOGISTICS

APPLICATION SUBMISSION & PAYMENT

Category (per m ² , excluding VAT)		Regular (~ Sep 25, 2025)
Space Only		USD 240
Shell Scheme	Basic	USD 270
	Premium	USD 300



Technical Visit

The REAAA Conference Goyang 2025 offers attendees an exceptional opportunity to experience Korea's cutting-edge innovations in the road and transportation sector through exclusive Technical Visits. Participants will gain firsthand insights into advanced technologies from both public and private sectors, showcasing transformative infrastructure solutions such as AI-driven traffic management systems, road driving simulators, and Korea's largest Tunnel Boring Machine (TBM) tunnel project. These visits highlight Korea's commitment to pioneering sustainable and safe road and transportation systems, contributing to the advancement of infrastructure.

- Each registered participant is allowed to join one Technical Visit.
- Participants may register individually or with an accompanying person.
- If there is more than one accompanying person, all must choose the same program.
- You cannot register for programs that overlap in schedule.
- Spaces are limited and available on a first-come, first-served basis.
- Programs may be canceled or rescheduled due to internal circumstances of the institutions, weather conditions, or other unforeseen factors.

Course			Date	Time	
Technical Visit	TV 1	Seoul Transport Operation & Information Service (Seoul TOPIS)	October 29th & 30th	Half Day	09:40 – 13:00
	TV 2	Hyundai Motorstudio Goyang	October 30th	Half Day	13:00 – 15:20
	TV 3	Hangang Tunnel Site & Promotion Hall	October 31st	Half Day	09:30 – 12:10
	TV 4	Seoul TG Traffic Control Center Korea Expressway Corporation Research Institute Cheoin Service Area Hangang Tunnel Site & Promotion Hall	October 29th & 30th	Full Day	08:30 – 18:00



Seoul Transport Operation & Information Service (Seoul TOPIS)

- October 29th & 30th (Wednesday & Thursday)
- 09:40 – 13:00
- Maximum 30 people



[Introduction]

Seoul TOPIS (Transport Operation & Information Service) is the integrated traffic control center responsible for operating and managing Seoul's entire transportation network. It collects and analyzes data from various sources within the city – including buses, subways, taxis, and autonomous vehicles – covering operational status, passenger volume, speed, traffic volume, incidents, and more, enabling real-time traffic management. In addition, TOPIS plays a crucial role in integrating and analyzing traffic data to provide diverse information services, enhancing the convenience of resident mobility and supporting evidence-based public transportation policy decisions.



[Highlights]

Control Room Tour and Briefing covering:

- Low Emission Zone (LEZ) Management System
- Bus Management System / Bus Information System (BMS/BIS)
- Cooperative Intelligent Transport Systems (C-ITS)
- Autonomous Driving Monitoring



Hyundai Motorstudio Goyang

- October 30th (Thursday)
- 13:00 – 15:20
- Maximum 19 people



[Introduction]

Hyundai Motorstudio Goyang offers visitors an enjoyable and exciting journey by showcasing the functionality and manufacturing processes of a variety of vehicles in Korea's largest mobility theme park. Through engaging visual, auditory, and tactile experiences with mobility, visitors can discover the automobile as more than just a means of transportation.

[Highlights]

Guided Tour of the Hyundai Motorstudio Permanent Exhibition, featuring:

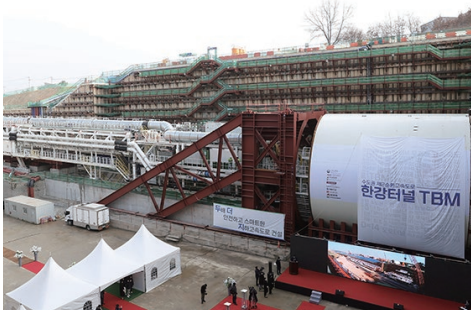
- Automobile Manufacturing Process
- Vehicle Safety Systems
- Autonomous Driving and Future Technology Exhibits





Hangang Tunnel Site & Promotion Hall

October 31st (Friday)
09:30 – 12:10
Maximum 40 people



[Introduction]

The Hangang Tunnel is a road tunnel constructed using Korea's largest-scale Tunnel Boring Machine (TBM) method. Featuring four lanes (two in each direction) and spanning a total length of 2.98 km, it was built at a depth of 20-35 meters below the surface of the Han River. Unlike conventional blasting methods, it was constructed using a mechanical excavation technique with advanced equipment, enhancing safety and precision. Additionally, the Hangang Tunnel Promotion Hall offers various exhibits and information about the tunnel's construction process and the TBM method.

[Highlights]

The Hangang Tunnel Promotion Hall provides explanations of the project overview and construction methods. It features a scaled-down model of the Shield TBM to illustrate construction principles. Visitors can experience the internal structure of the Shield TBM via Virtual Reality (VR) devices. A virtual tunnel experience zone showcases the construction process and the completed tunnel using a multi-faceted projection system on the front and side walls, maximizing the sense of immersion and space.



(1) Seoul TG Traffic Control Center & (2) Korea Expressway Corporation Research Institute & (3) Cheoin Service Area & (4) Hangang Tunnel Site & Promotion Hall

October 29th & 30th (Wednesday & Thursday)
08:30 – 18:00
Maximum 30 people



(1) Seoul Tollgate (TG) Traffic Control Center

[Introduction]

The Seoul Tollgate (TG) Traffic Control Center is a key facility operating the nationwide advanced expressway traffic management system. Utilizing state-of-the-art Intelligent Transportation System (ITS) technology for real-time traffic flow monitoring, accident prevention, and rapid response, it ensures a safe and smooth expressway environment. The Center provides optimal driving information to expressway users and efficiently regulates traffic flow through smart traffic management solutions.

[Highlights]

- Facility housing the nationwide advanced expressway traffic management system.
- Utilizes cutting-edge traffic management systems, including over 8,000 CCTVs and 3,000 vehicle detectors across the national expressway network.



(2) Korea Expressway Corporation Research Institute

[Introduction]

The Korea Expressway Corporation Research Institute, staffed by highly skilled researchers and equipped with cutting-edge facilities, is Korea's sole comprehensive road research institute. Through pioneering research and development, it establishes a foundation for safe and innovative technologies, leading the Fourth Industrial Revolution in the road and transportation sector. KICT strives tirelessly to ensure expressways earn the public's empathy and trust.

[Highlights]

- A future-oriented research institution based on Fourth Industrial Revolution technologies, featuring facilities like the Pavement Testing Facility and the Driving Simulator Experiment Center.



(3) Cheoin Service Area

[Introduction]

The Cheoin Service Area, located along the Sejong-Pocheon Expressway in Yongin City, Gyeonggi Province, is a bi-directional integrated service area equipped with futuristic technology and various amenities. It features electric vehicle charging stations, VR sports experiences, autonomous cleaning robots, alongside diverse food and beverage options including a food court and cafes. The Service Area is establishing itself as a new destination offering relaxation and entertainment during road trips.

[Highlights]

- Bi-directional integrated service area along the Sejong-Pocheon Expressway.
- An over-the-highway service area offering scenic views from above the expressway.
- Features advanced facilities such as an Urban Air Mobility (UAM) drone taxi experience zone and a VR experience hall.



(4) Hangang Tunnel Site & Promotion Hall

[Introduction]

The Hangang Tunnel is a road tunnel constructed using Korea's largest-scale Tunnel Boring Machine (TBM) method. Featuring four lanes (two in each direction) and spanning a total length of 2.98 km, it was built at a depth of 20-35 meters below the surface of the Han River. Unlike conventional blasting methods, it was constructed using a mechanical excavation technique with advanced equipment, enhancing safety and precision. Additionally, the Hangang Tunnel Promotion Hall offers various exhibits and information about the tunnel's construction process and the TBM method.

[Highlights]

The Hangang Tunnel Promotion Hall provides explanations of the project overview and construction methods. It features a scaled-down model of the Shield TBM to illustrate construction principles. Visitors can experience the internal structure of the Shield TBM via Virtual Reality (VR) devices. A virtual tunnel experience zone showcases the construction process and the completed tunnel using a multi-faceted projection system on the front and side walls, maximizing the sense of immersion and space.

Cultural Visit

The REAAA Conference Goyang 2025 invites participants and their companions to discover Korea's rich history and vibrant modern culture through specially designed Cultural Visits and Accompanying Persons Tour Programs. These programs offer a unique blend of tradition and modernity, providing an immersive experience of Korean art, heritage, and contemporary life.

- Each registered participant is allowed to join one Cultural Visit.
- Participants can register individually or together with an accompanying person.
- If there is more than one accompanying person, all must choose the same program.
- You cannot register for programs that overlap in schedule.
- Spaces are limited and available on a first-come, first-served basis.
- Programs may be canceled or rescheduled due to internal circumstances of the visit places, weather conditions, or other unforeseen factors.

Course			Date	Time	
Cultural Visit	CV 1	Cheong Wa Dae(Blue House) & Tongin Market	October 29th	Half Day	08:40 – 13:30
	CV 2	National Museum of Korea	October 29th	Half Day	09:20 – 14:00
	CV 3	Bongeunsa Temple & Seoul Sky	October 30th	Half Day	08:40 – 14:00
	CV 4	Cheonggyecheon Stream & HiKR Ground & Gwangjang Market	October 30th	Half Day	09:00 – 14:10
	CV 5	Changdeokgung Palace & Secret Garden	October 31st	Half Day	08:30 – 13:00
	CV 6	N Seoul Tower & Myeongdong Street & Namsangol Hanok Village	October 29th	Full Day	09:00 – 16:30
	CV 7	Gyeongbokgung Palace(Hanbok Tour) Self-Guided Tour of Nearby Attractions Museum Kimchikan & Insa-dong Ssamziegil	October 30th	Full Day	08:30 – 17:20



(1) Cheong Wa Dae (Blue House) & (2) Tongin Market

- October 29th (Wednesday)
- 08:40 – 13:30
- Maximum 40 people



(1) Cheong Wa Dae (Blue House)

[Introduction]

Cheong Wa Dae (Blue House) was the site where 12 presidents conducted state affairs for 74 years starting from 1948, making it a pivotal location in modern Korean history. It served as a cradle that guided the major currents through historical stages such as industrialization, democratization, globalization, and advancement. Over three years have passed since Cheong Wa Dae returned to the public domain on May 10, 2022, and it is now becoming a space enjoyed not only by Koreans but also by people from all over the world.

[Highlights]

- Viewings available of the Presidential Office, Presidential Residence, and other areas.
- Walking paths featuring traditional houses over 200 years old, more than 120 types of trees, and commemorative trees planted by past presidents.



(2) Tongin Market

[Introduction]

Tongin Market originated from a public market established in 1941 during the Japanese colonial period for Japanese residents near Hyoja-dong. Following the Korean War, as the population in the Seochon area (the neighborhood west of Gyeongbokgung Palace) rapidly increased, stalls and shops sprang up around the old public market, gradually forming the market structure seen today.

[Highlights]

- A traditional local market in Seoul, opened in 1941.
- Offers the unique "Dosirak Cafe" experience where visitors can purchase traditional coins (yeopjeon) and use them to fill a lunchbox with various foods selected from different market stalls.



National Museum of Korea

- October 29th (Wednesday)
- 09:20 – 14:00
- Maximum 30 people



[Introduction]

Within the exhibition halls of the National Museum of Korea, the traces and traditions left by countless people – from distant antiquity to the recent past, including world heritage items – await you. Paleolithic hand axes, gold crowns and pensive bodhisattva statues from the Three Kingdoms period, Goryeo celadon, and Joseon paintings and calligraphy displayed in the museum serve as links connecting the past with the present and serve as inflexion points where the ancient and contemporary dramatically converge.

[Highlights]

Visitors can fully immerse themselves in and enjoy six permanent exhibition halls organized by era and theme, special exhibition galleries showcasing diverse content, exhibition commentary programs to enhance understanding, a Children's Museum for learning through sensory engagement, various educational programs, and hands-on content utilizing cutting-edge technology.





(1) Bongeunsa Temple & (2) Seoul Sky

October 30th (Thursday)
 08:40 – 14:00
 Maximum 40 people



(1) Bongeunsa Temple

[Introduction]

Bongeunsa Temple, located in the Samseong-dong neighborhood in Seoul's bustling Gangnam district, is a temple with over 1,200 years of history. Founded in 794 (in the 10th year of King Wonseong of Silla) by State Preceptor Yeonhoe, Bongeunsa became a cornerstone for the revival of Buddhism during the Joseon Dynasty – a period marked by the suppression of Buddhism and promotion of Confucianism – through the dedicated efforts of Master Bowoo, who strived to preserve the Buddhist lineage.

[Highlights]

Today, Bongeunsa is creating a new history for Korean Buddhism through temple practices centered on meditative practice. Through various programs, including Templestay, it actively promotes high-quality Korean Buddhist culture both at home and abroad. Bongeunsa continues to uphold its status as a major urban temple dedicated to promoting social welfare.



(2) Seoul Sky

[Introduction]

Located at the very top of Lotte World Tower – the tallest building in Korea and the 6th tallest in the world (123 floors, 555m) – the Seoul Sky observatory (at 500m, the 6th highest observation deck globally) is the highest accessible point in Korea. It offers a stunning 360-degree panoramic view of the capital city of Seoul, which encapsulates Korea's brilliant history and dynamic modern culture, all in one glance.

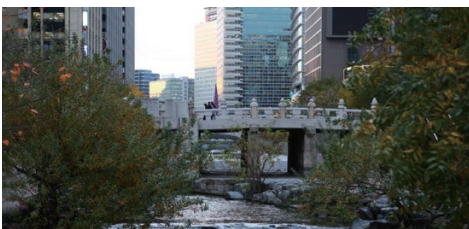
[Highlights]

- Dizzying and thrilling hands-on experiences await 500 meters above ground.
- Diverse exhibitions centered around the theme of the 'Pride of Korea'.
- The experience is made even more special by the chance to enjoy a leisurely cup of coffee above the clouds and browse a selection of tower-themed souvenirs.



(1) Cheonggyecheon Stream & (2) HiKR Ground & (3) Gwangjang Market

October 30th (Thursday)
 09:00 – 14:10
 Maximum 25 people



(1) Cheonggyecheon Stream

[Introduction]

Cheonggyecheon, in a nutshell, is a 10.84 km stream flowing between the Jongno-gu and Jung-gu districts. However, countless stories are condensed within it – stories encompassing Seoul's 600-year history as the country's capital, as well as the personal memories of its residents. From July 2003 to September 2005, Cheonggyecheon underwent a massive transformation. This major project involved restoring a 5.84 km section around the previously covered Cheonggyecheon Road and Samil-ro, installing a total of 22 bridges, and converting it into a recreational space for residents and visitors.

[Highlights]

- A stream stretching 10.9 km through the center of Seoul.
- Reborn through restoration work in 2005 as an eco-friendly urban attraction.



(2) HiKR Ground

[Introduction]

Opened at the Korea Tourism Organization's Seoul Center, HiKR Ground is a Korean tourism promotion center where visitors can simultaneously experience K-Pop and view media art. The name 'HiKR Ground' combines 'Hi' (a friendly greeting) and 'KR' (Korea), constituting a 'playground' of sorts for global travelers. It targets the MZ Generation, offering Korean tourism content in diverse and engaging formats.

[Highlights]

- An integrated cultural space located along Cheonggyecheon Stream.
- A place to explore various Hallyu (Korean Wave) and tourism-related content through Extended Reality (XR) technology and diverse media platforms.
- Regular guided tours available (English).



(3) Gwangjang Market

[Introduction]

One of Seoul's most vibrant traditional markets, Gwangjang Market is easily accessible to travelers due to its central location. Built in the early 20th century, this long-standing traditional market handles a wide range of items, including clothing and food, but is particularly famous for its food stalls.

It overflows with choices like the addictive mayak gimbap (often served with a distinctive dipping sauce), savory nokdujeon (green bean pancakes) cooked fresh on the spot, modeumjeon (assorted pan-fried pancake delicacies offering the fun of choosing), king-sized tteokbokki (spicy fried rice cakes), and eomuk (fish cakes). Full of enjoyable experiences at affordable prices, the market is a place one can visit without worry. Those interested in clothing might also enjoy browsing the colorful hanbok (traditional Korean attire) shops and the vintage clothing arcade on the second floor.

[Highlights]

A traditional market opened in 1905, offering an authentic atmosphere and serving as a prime spot to purchase handicrafts, traditional clothing, and souvenirs.



Changdeokgung Palace



October 31st (Friday)



08:30 – 13:00



Maximum 20 people



[Introduction]

Changdeokgung Palace is renowned as the most Korean of palaces for its harmonious integration with nature and is designated as a UNESCO World Heritage site. Originally built in 1405 (in the 5th year of King Taejong's reign) as a secondary palace to the main royal palace, Gyeongbokgung, Changdeokgung was destroyed during the Imjin War (Japanese invasions of 1592, in the 25th year of King Seonjo's reign). It was the first palace to be rebuilt, in 1610 (in the 2nd year of King Gwanghaegun's reign). Subsequently, successive kings favored Changdeokgung, using it more frequently than Gyeongbokgung for about 270 years until the latter was reconstructed in 1867, effectively making Changdeokgung the de facto primary royal residence during that period. Notably, Heungbokheon Hall, an annex to Daejojeon Hall, is the tragic site where the Japan-Korea Treaty of 1910 (resulting in Korea's annexation) was finalized. Furthermore, the Nakseonjae Complex is where the last members of the Korean Empire's imperial family (Empress Sunjeong, Crown Princess Euimin (Yi Bangja), and Emperor Gojong's daughter Princess Deokhye) resided until their passing after Korea's liberation.

[Highlights]

- A UNESCO World Heritage palace originally constructed in 1405.
- A historic palace offering glimpses into the lives of Joseon Dynasty kings and queens.
- English guided tours available.



(1) N Seoul Tower & (2) Myeongdong Street & (3) Namsangol Hanok Village

- October 29th (Wednesday)
- 09:00 – 16:30
- Maximum 25 people



(1) N Seoul Tower

[Introduction]

Where the clouds meet the sky, N Seoul Tower represents an exquisite blend of Namsan Mountain's natural beauty and 21st-century technology. The complex is one of Seoul's premier integrated cultural spaces, offering relaxed leisure and diverse cultural experiences.

[Highlights]

A tourist landmark offering 360° panoramic views of the entire Seoul cityscape, including stunning sunsets over the Han River, observable through digital telescopes



(2) Myeongdong Street

[Introduction]

Located in Jung-gu, Seoul, Myeongdong is a representative shopping district and tourist destination. It took on its current form after 1956 following urban redevelopment, which led to a concentration of shopping centers, high-end boutiques, jewelry stores, and offices in the neighborhood. With economic growth, Myeongdong gradually became a center of consumer culture and entertainment, although its commercial influence diminished somewhat with the development of the Gangnam district. Currently, it thrives as a popular shopping destination for international tourists, solidifying its position as one of Seoul's iconic landmarks.

[Highlights]

- Seoul's premier hub for shopping and culture.
- Experience both the modern face and traditional charm of Korea simultaneously



(3) Namsangol Hanok Village

[Introduction]

Its natural beauty made it a place for people to partake in pungnyu (refined leisure pursuits), building pavilions in every valley and responding to nature's rhythms with poetry and painting. It was a place visited repeatedly by refined men and women seeking scenic beauty for recreation and leisure.

On this 7,934 m² site on the northeast slope, five traditional Korean houses (hanok), designated as Seoul City Folk Resources and previously scattered across the city, have been relocated and restored. Furnished appropriately to reflect the status and character of their original occupants, they illuminate the lifestyles of people from bygone ages. The previously damaged topography was restored to its original form within the traditional garden, planted with traditional tree species native to Namsan. A stream was also built to allow water to flow naturally, and pavilions and ponds were restored to complete the traditional-style garden.

[Highlights]

- Visitors can admire a traditional-style garden and learn more about how people used to live at a glance, from noblemen's residences to commoners' homes.
- Artistic works and souvenirs created by artisans designated as Intangible Cultural Heritage are exhibited.
- English guided tours available.





(1) Gyeongbokgung Palace & (2) Museum Kimchikan & (3) Insa-dong Ssamziegil

October 30th (Thursday)
 08:30 – 17:20
 Maximum 24 people



(1) Gyeongbokgung Palace

[Introduction]

Gyeongbokgung Palace, built in 1395, is the most iconic and expansive of the Five Grand Palaces constructed during the Joseon Dynasty. Located in the heart of Seoul with Bugaksan Mountain as its scenic backdrop, it served as the main royal residence and the center of political and cultural affairs. Although it was destroyed during the Imjin War in the late 16th century, the palace was later restored in the 19th century. Today, visitors can explore its beautifully reconstructed buildings, stroll through its serene gardens and courtyards, and experience Korean royal culture. Highlights include Gyeonghoeru Pavilion, used for royal banquets, and the National Palace Museum and National Folk Museum nearby. The changing of the royal guard ceremony held at Gwanghwamun Gate is a must-see cultural performance that brings history to life.

[Highlights]

- Served as the main palace among the five grand palaces of the Joseon Dynasty.
- The palace grounds include notable structures such as Geunjeongjeon Hall (Throne Hall), Hyangwonjeong Pavilion, Gyeonghoeru Pavilion (Royal Banquet Hall), and the National Folk Museum of Korea.



(2) Museum Kimchikan

[Introduction]

In traditional Korean society, the location used for preparing side dishes was called the changan, the place for preparing the king's meals the suragan, and the place for storing provisions the gotgan. Inspired by these functional spaces ending in '-gan' (間, meaning space or room), the museum was named 'Kimchikan' – embodying its commitment to serve as a space where the diverse aspects and fascinating narratives surrounding kimchi are preserved, and where visitors can discover, enjoy, and experience kimchi.

[Highlights]

- Selected by CNN as one of the world's top 11 food museums.
- Features exhibits on kimchi's origins, preparation process, and regional varieties.
- Offers a hands-on kimchi-making experience.
- Docent audio guides available (English).



(3) Insa-dong Ssamziegil

[Introduction]

Insa-dong's Ssamziegil is a unique integrated cultural space where tradition and modernity exist in harmony. Discover a place where diverse shops, craft stores, galleries, and cafes converge, all reinterpreting Korea's unique style and sensibility with a modern touch. The building's distinctive spiral structure is designed to allow visitors to naturally stroll, shop, and view exhibitions as if taking a leisurely walk, offering a special experience for Korean and foreign visitors alike. It provides hands-on encounters with traditional Korean crafts and design products, making it an ideal space to experience the country's cultural charm.

[Highlights]

- Ssamzie Workshop experiences available (e.g., clay art, Hanji paper crafts, woodcrafts).
- A popular tourist shopping spot for traditional souvenirs and art pieces.



Important Notes

- The hotels listed below are recommended for their convenient access to the venue, either on foot or by public transportation.
- All details are based on information from each hotel's official website.
- Please note that this is for informational purposes only; participants must make reservations directly through the respective hotel websites.
- For inquiries regarding services such as early check-in or late check-out, please contact the hotels directly.

List of Recommended Hotels

* Near by KINTEX 2 Exhibition

No.	Name of Hotel	Grade	Region	Distance from KINTEX 2 Exhibition
1	Kintex by K-tree	3	Goyang-si, Ilsanseo-gu	0.6km (10 minutes on foot)
2	Sono Calm Goyang	5	Goyang-si, Ilsandong-gu	0.9km (16 minutes on foot)

* Near by Seoul Station

No.	Name of Hotel	Grade	Region	Travel Time from Hotel to KINTEX 2 Exhibition	Distance from Hotel to Seoul Station Exit No.2
1	Hotel Manu Seoul	3	Seoul, Jung-gu	31 minutes	0.4 km (6 minutes on foot)
2	Ramada Hotel and Suites Seoul Namdaemun	3	Seoul, Jung-gu	35 minutes	0.7 km (10 minutes on foot)
3	Four Points by Sheraton Josun, Seoul Station	4	Seoul, Yongsan-gu	36 minutes	0.7 km (11 minutes on foot)
4	About Stay Seoul (Hotel Stay Inn)	3	Seoul, Yongsan-gu	37 minutes	0.7 km (12 minutes on foot)
5	Fraser Place Central Seoul	4	Seoul, Jung-gu	40 minutes	0.8 km (15 minutes on foot)
6	Hotel Gracery Seoul	3	Seoul, Jung-gu	41 minutes	0.9 km (16 minutes on foot)
7	The Stay Classic Hotel Myeongdong	4	Seoul, Jung-gu	42 minutes	1.0 km (17 minutes on foot)

- The travel time between 'Seoul Station' and 'KINTEX Station' via GTX-A is approximately 17 minutes.
- From 'KINTEX Station', it takes about 8 minutes on foot to reach the Venue (KINTEX 2 Exhibition).



Hotel Details

Kintex by K-tree



Kintex by K-tree Hotel is a residential hotel in front of KINTEX. There are Hyundai Department Store and a large supermarket within 3 minutes of walking distance. Gimpo Airport is 20 minutes away by car and Incheon International Airport is 20 minutes away by car.

255-3, Kintex-ro, Ilsandong-gu, Goyang-si, Gyeonggi-do, Korea
+82-31-540-2400



Sono Calm Goyang



The only 5-star hotel in Gyeonggi-do Province near KINTEX. SONO CALM GOYANG, the optimal place for business, is not only in close proximity to the international airport but also has convenient transportation offering great accessibility.

20, Taegeuk-ro, Ilsandong-gu, Goyang-si, Gyeonggi-do, Korea
+82-1588-4888



Hotel Manu Seoul



From Seoul station to Sungnyemun Gate, Myeong-dong, HOTEL MANU is located in the center of lively Seoul city. You can easily catch an eye of the building that certainly stands out among other office buildings in the area.

19, Toegye-ro, Jung-gu, Seoul, Korea
+82-2-777-0100

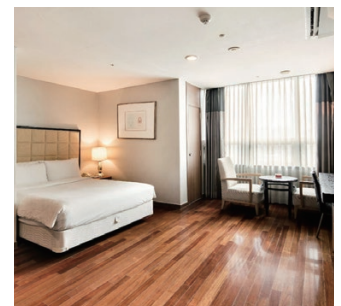


Ramada Hotel and Suites Seoul Namdaemun



Located at the center of transportation, shopping and business in SEOUL & Seoul Transportaion No.1 Hotel, Ramada Hotel & Suites Seoul Namdaemun! It is in a very good location within walking distance to Seoul Station, City Hall Station, and Seodaemun Station.

27, Chilpae-ro, Jung-gu, Seoul, Korea
+82-2-775-7177

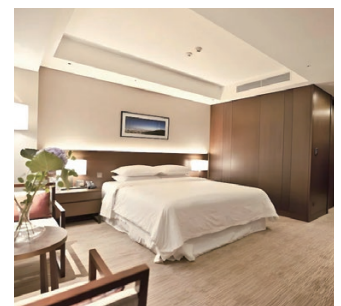
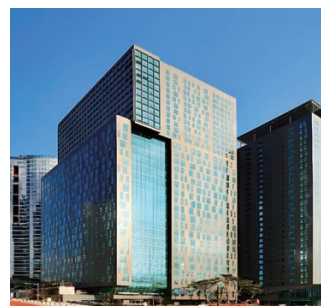


Four Points by Sheraton Josun, Seoul Station



This hotel is connected to Seoul Station, providing easy access to the KTX and airport trains. Discover nearby sights like Myeongdong, the Yongsan army base, the National Museum of Korea, and Itaewon nightlife before returning to our hotel to refuel with delicious local and international cuisine at The Eatery.

366, Hangang-daero, Yongsan-Gu, Seoul, Korea
+82 2-6070-7000



About Stay Seoul (Hotel Stay Inn) ★★☆☆

Hotel's prime location near Seoul Station offers easy access to the city's major attractions, including historical landmarks, shopping districts, and cultural hotspots. Whether you're visiting for business or pleasure, our hotel provides a tranquil retreat amidst the bustling city, ensuring a memorable stay.

- 📍 35-146, Dongja-dong, Yongsan-gu, 140-821 Seoul, Korea
- ☎ +82 2-771-0880



Fraser Place Central Seoul ★★☆☆

Fraser Place Central Seoul is located in the KTX Seoul Station area, the heart of business and culture in Korea. The property offers 269 rooms ranging from studios to penthouses. Providing the refined comfort of a premium residence along with top-class hotel services, it offers mid- to long-term guests a stay that feels even more comfortable than home.

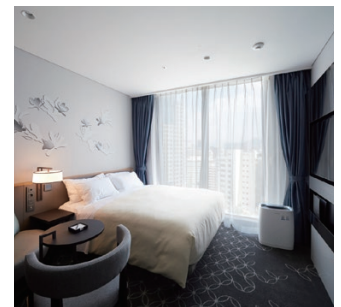
- 📍 78 Tongil-ro, Jung District, Seoul, Korea
- ☎ +82-2-2220-8888



Hotel Gracery Seoul ★★☆☆

Opened in August 2018, this hotel features a total of 336 guest rooms along with various facilities such as a restaurant, meeting rooms, coin laundry, convenience store, and parking lot. It is located in the heart of Jung-gu, Seoul, an area rich in famous tourist attractions and diverse dining options, and is conveniently close to Seoul Station for easy travel to other regions.

- 📍 12 Sejong-daero 12-gil, Jung District, Seoul, Korea
- ☎ +82 2-6936-100



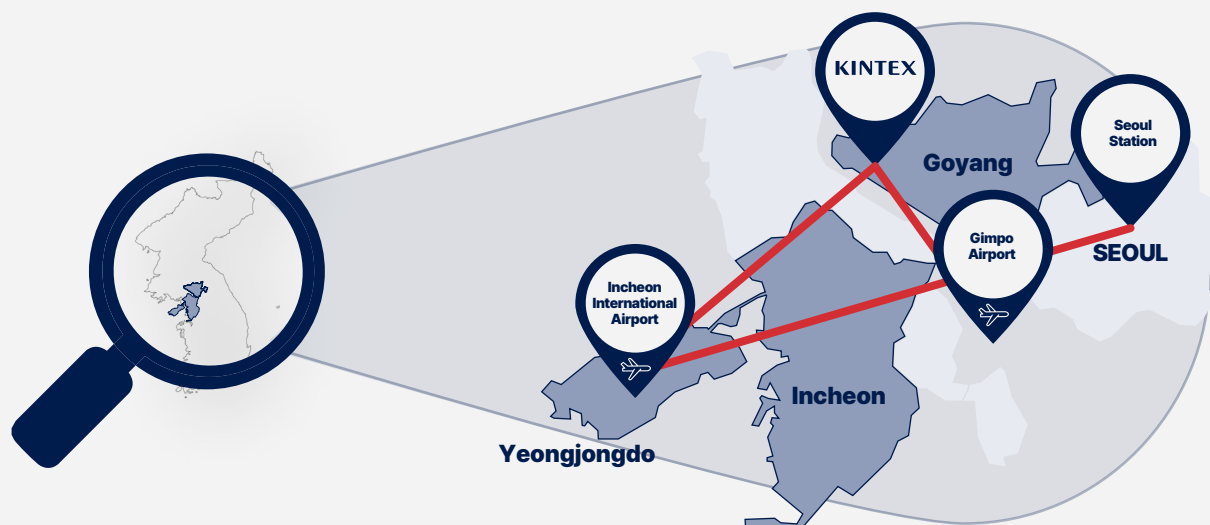
The Stay Classic Hotel Myeongdong ★★☆☆

The hotel features a total of 117 guest rooms, offering a variety of room types with modern designs to provide a comfortable stay. It boasts excellent accessibility, situated within a 10-minute walk from popular shopping destinations such as Myeong-dong and Namdaemun Market. Our hotel operates a 24-hour front desk and offers facilities including a fitness center, a business center, and a self-service luggage storage area.

- 📍 27 Namdaemun-ro, Jung District, Seoul, Korea
- ☎ +82 2-3789-7002



Venue



KINTEX (Exhibition 2)

KINTEX (Korea International Exhibition Center) is the largest exhibition and convention center in South Korea, located in Goyang, just northwest of Seoul. It features a total exhibition space of over 100,000 square meters, making it a premier venue for international conferences, trade shows, and exhibitions. With state-of-the-art facilities and convenient access to transportation, KINTEX serves as a key hub for global business and networking events.

Address 10390, 217-60, Kintex-ro, Ilsanseo-gu, Goyang-si, Gyeonggi-do, Republic of Korea

Telephone (+82) 31-995-8114

Website <https://www.kintex.com/web/en/index.do>

Location From Incheon International Airport: Approximately 45min – 60min. by car
From Gimpo International Airport: Approximately 20min – 30min. by car

REAAA Conference Goyang 2025 Organizing Committee

8F, 26, Wiryeseoil-ro, Sujeong-gu, Seoungnam-si, Gyeonggi-do, Republic of Korea (13647)

General Inquiries

+82 70 4148 6512

info@reaaakorea2025.org

Sponsorship

+82 2 3490 1051

partnership@reaaakorea2025.org

Exhibition Inquiries

+82 2 3490 1072

global@reaaakorea2025.org

www.reaaakorea2025.org