

NEXCO-WEST CAPABILITIES for EXPRESSWAYS

Name: AKIRA OKAMOTO Ph.D
West Nippon Expressway Company Limited
Address : ZIP 530-0003
Dozima Avanza 19F,1-6-20 Dozima Kita-ku
Osaka, 530-0033,Japan
TEL+81-6-6344-9341 FAX+81-6-6344-7184



**We have solutions
to make expressways in the world better.**

✓ General Information

✓ Construction

✓ O&M

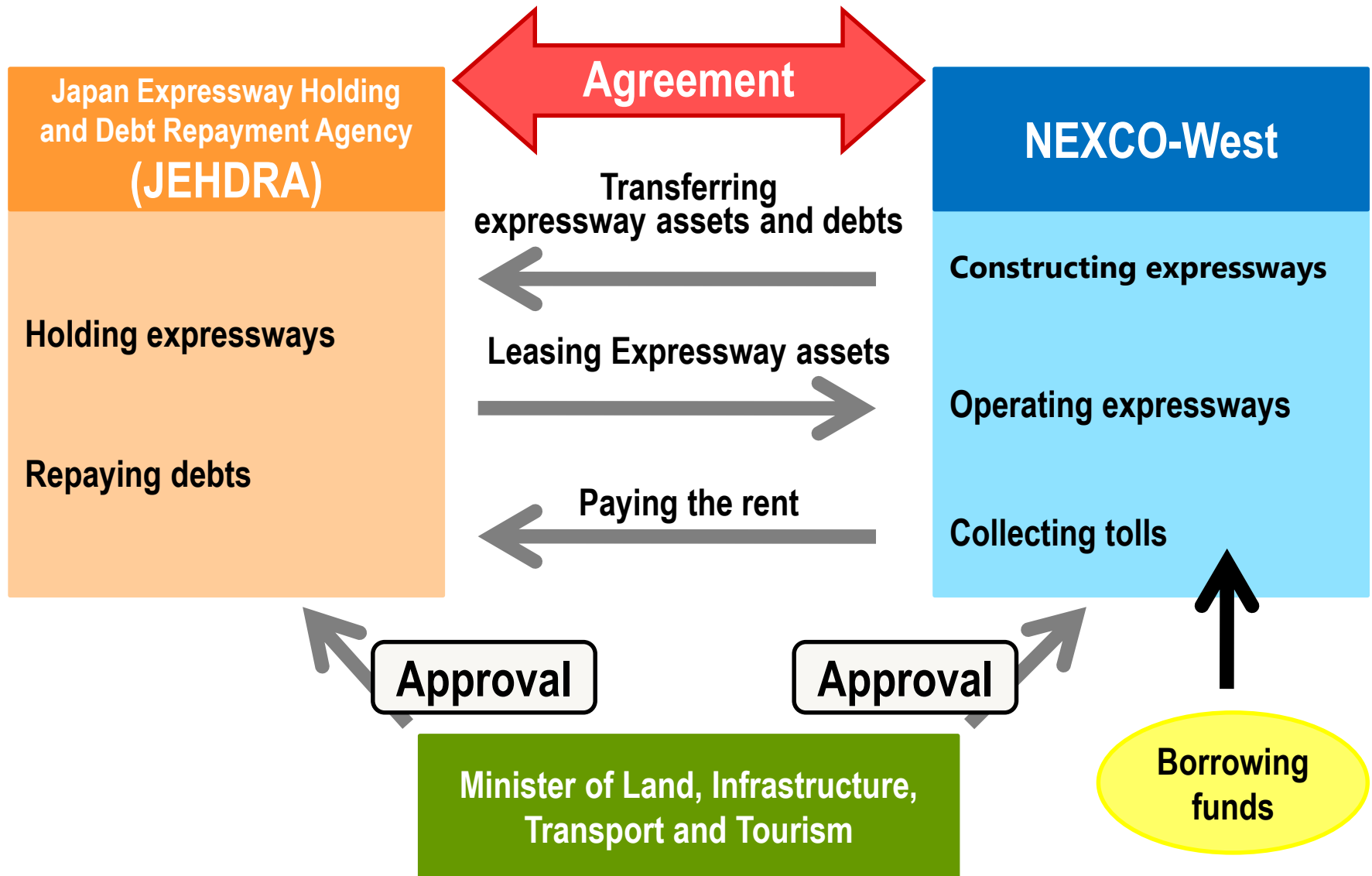
✓ Overseas Business

Company Profile

- Company name: West Nippon Expressway Company Ltd.
- Representative: Yoshinari Ishizuka (President, CEO)
- Date of establishment: October 1st, 2005
- Toll road operation: 3,453km (As of July. 2015)
- Number of Traffic: 2.71 million per day (Average in FY2014)
- Shareholders' equity: 475 million USD
- Toll Revenue: 7,181 million USD (FY2014)
- Associated revenue : 1,442 million USD (FY2014)
- Employees: 2,376 (As of March 2015)
- Head office: Osaka, Japan

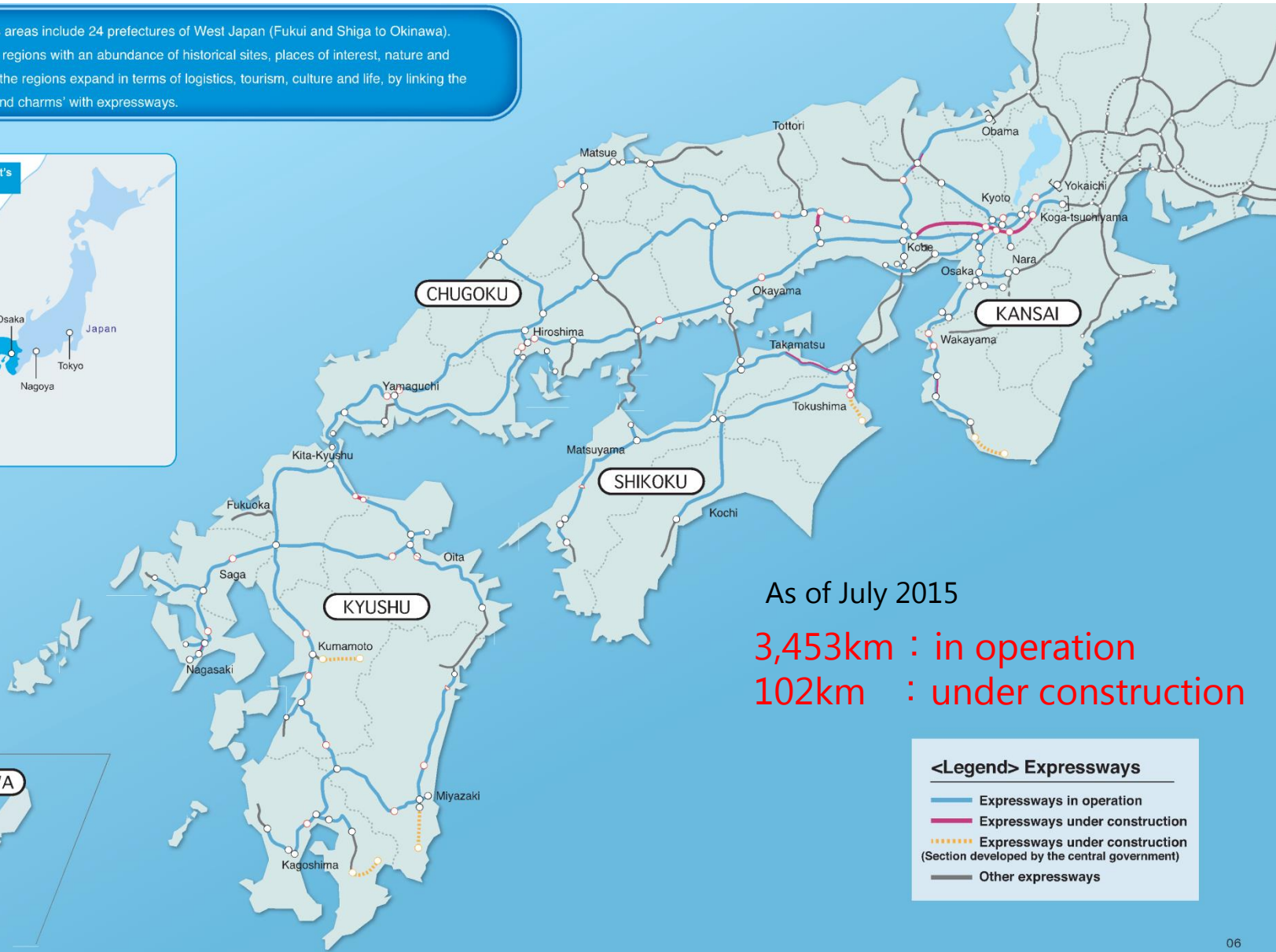
- Credit rating: A1 (MOODY'S)
AA+ (Rating & Investment Information, Inc.)

Business Scheme of Expressways in Japan



Business Area

NEXCO-West's business areas include 24 prefectures of West Japan (Fukui and Shiga to Okinawa). In West Japan, there are regions with an abundance of historical sites, places of interest, nature and charms. The potential of the regions expand in terms of logistics, tourism, culture and life, by linking the regions diverse 'values and charms' with expressways.

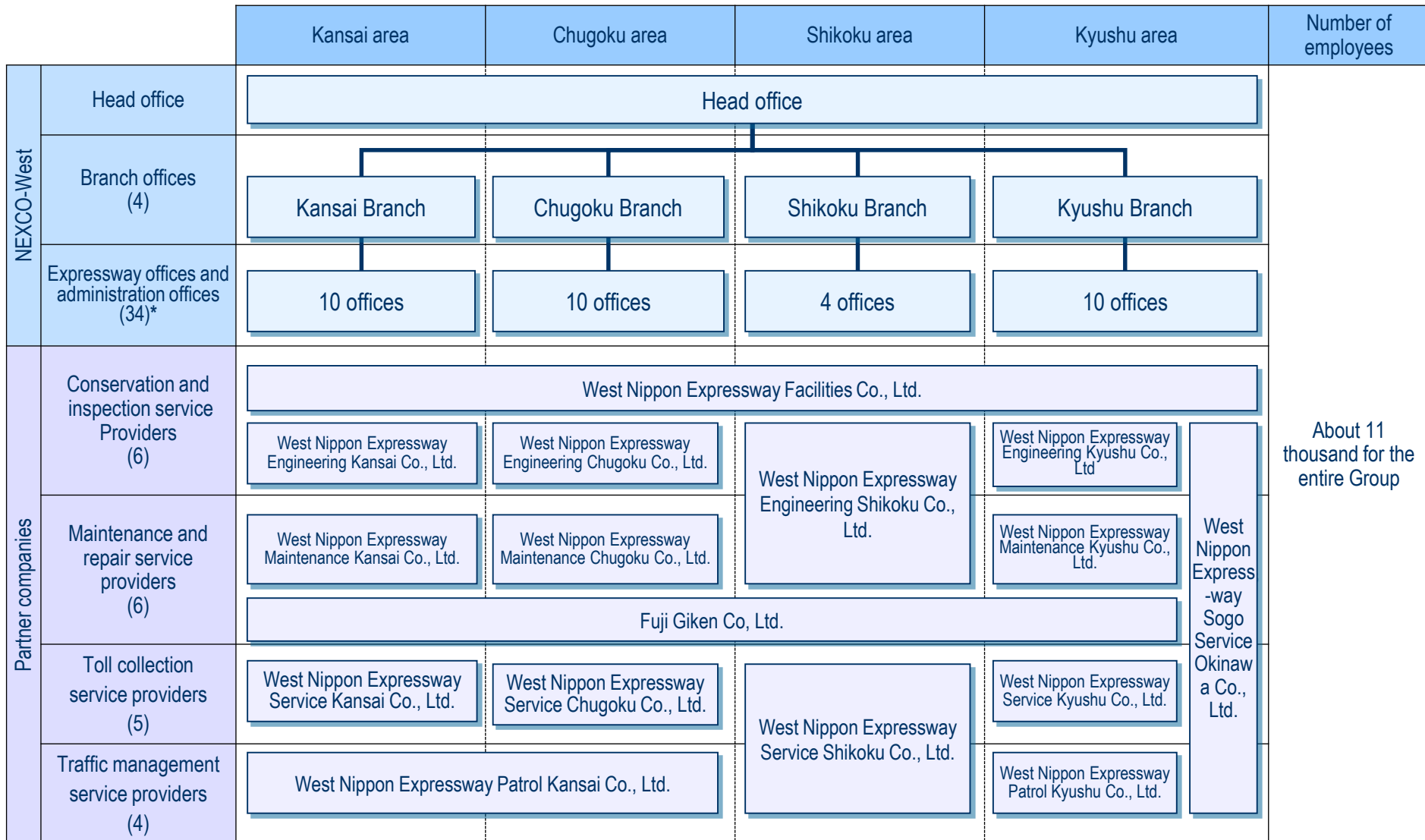


As of July 2015
3,453km : in operation
102km : under construction

<Legend> Expressways

- Expressways in operation
- Expressways under construction
- Expressways under construction (Section developed by the central government)
- Other expressways

Cooperative Structure with Affiliate Companies



*Operation office only

Business Fields

① Construction (102km)

- Conduct study and research on the effects and feasibility of expressway projects
- Manage expressway construction projects in effective and efficient ways



② Operation and Maintenance (3,453km)

- Operate and maintain expressways for 24-hour
- Main four category works:
Toll collection works, Traffic management, Inspection, and Maintenance



③ Associated Business

(Rest Area Business, New Business and Overseas Business)

- Construct and operate restaurants, shops, gas stations and so forth



Total Management

Tasks in project

Planning

Public Meeting

Survey

Design

Design negotiation

Land acquisition

Construction

Opening

- ✓ Economic survey
- ✓ Estimation of traffic volume
- ✓ Environmental impact research
- ✓ Public meeting on project overview
- ✓ Installation of center peg
- ✓ Site survey
- ✓ Geological survey
- ✓ Road design
- ✓ Bridge design
- ✓ Tunnel design etc.
- ✓ Public meeting on design
- ✓ Installation of area indicating peg
- ✓ Negotiation of land acquisition
- ✓ Construction
- ✓ Completion inspection



Public meeting



Geological survey



Opening ceremony

Construction Records in Difficult Situations

- Construction works without stopping traffic



The existing expressway

- Construction works in mountainous area (earthwork)



Business Fields in O&M

Toll collection



Toll collection
at toll booth



Electronic Toll
Collection (ETC)

Traffic management



Traffic Patrol Squad



Traffic control center

Inspection



Hammering
inspection for bridge



Inspection for
message sign board

Maintenance

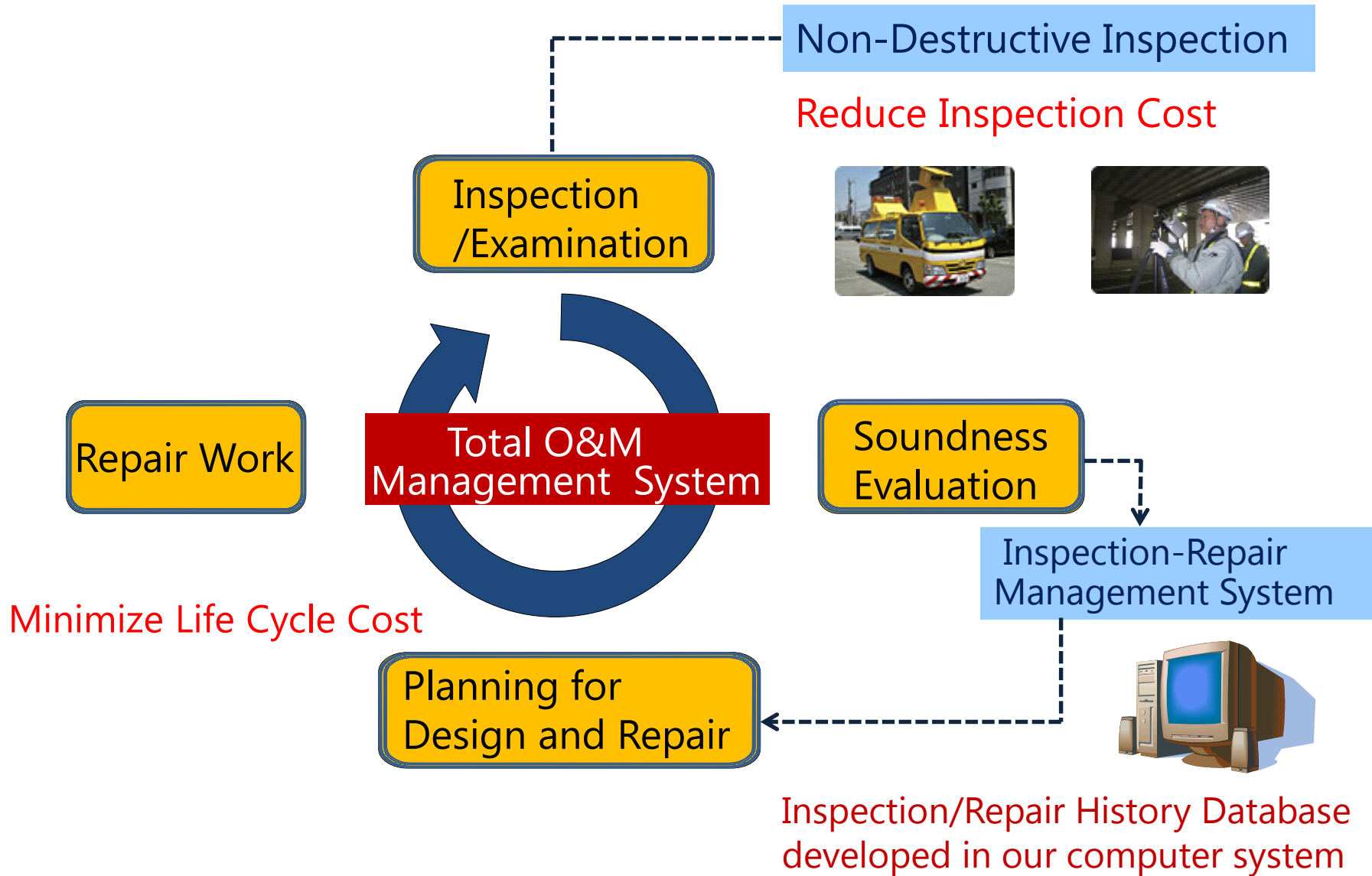


Road cleaning
sweeper



Emergency
pothole repair

Total Management in O&M



Non-Destructive Inspection System

Crack, Rut and IRI Inspection Vehicle

- Read the crack conditions and automatically output on drawing
- Rut and IRI conditions are output in CSV format
- Possible to inspect in the day time
- IRI is calculated by each 10m, 100m and 200m



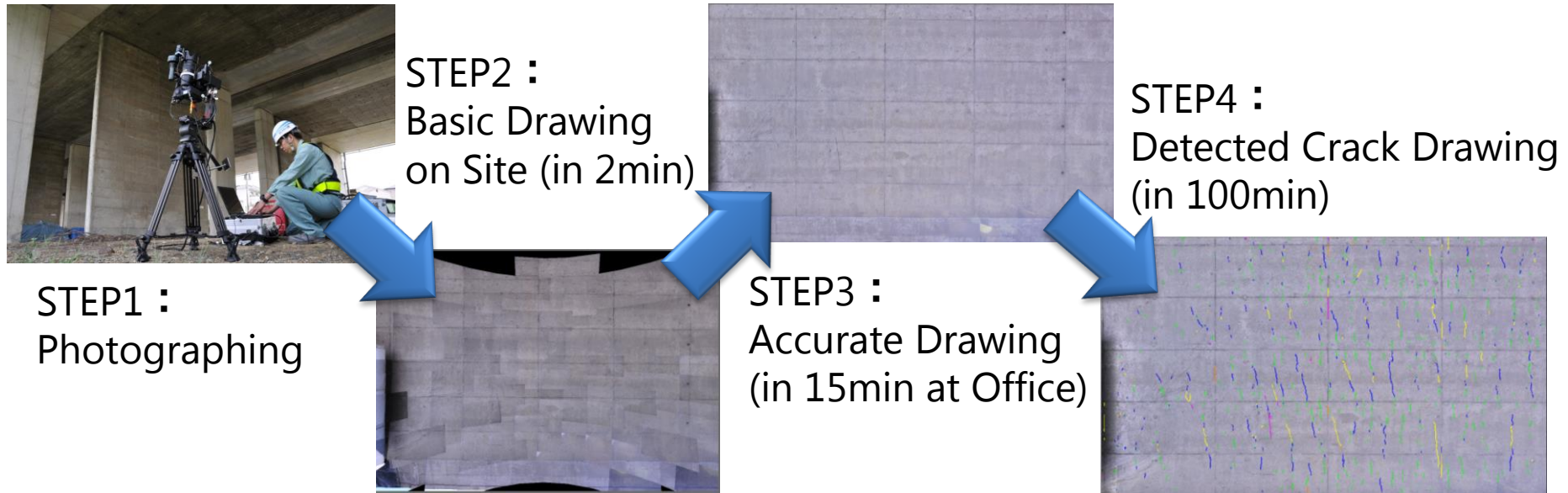
Contents	Velocity	Width of Road	Accuracy of Measurement
①Crack Photographing System	Maximum 100km/h	5.0m	Readable: 1.0mm Crack
②Rut Measuring System		5.0m	Accuracy: ±3mm for Rut depth (※) in Traverse Profile
③IRI Measuring System		—	Accuracy: ±30% for standard deviation(※) in Vertical Profile

Non-Destructive Inspection System

Inspection Technology for Concrete Bridges

<Auto CIMA>

- High place inspection without special vehicle (Maximum height 40m)
- Objective evaluation without close visual inspection
- Just 15 minutes to get accurate drawing
- **Automatic crack detection (Minimum width 0.2mm)**



※ Auto CIMA is highly praised in NETIS (New Technology Information Site):
<http://www.m-netis.mlit.go.jp/news/20140911.html> (in Japanese)

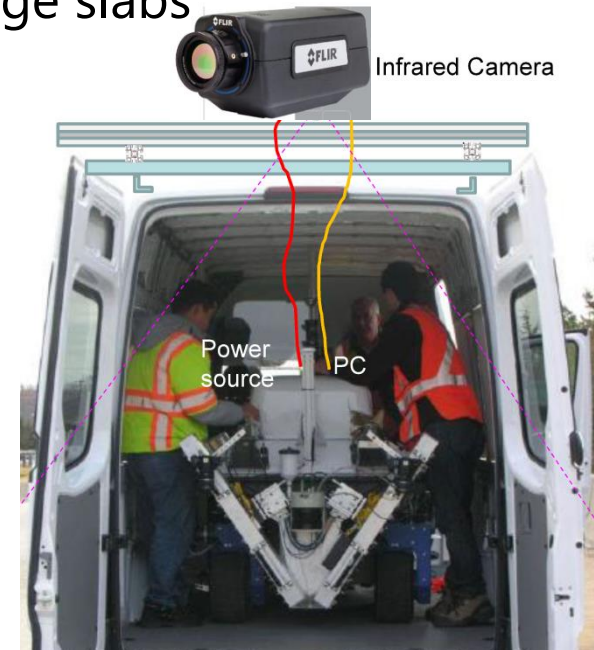
Non-Destructive Inspection System

Screening Tool adopted in USA

- ✓ Screening system for inspection places on bridge slabs
 - Analysis software for slab deterioration
 - Infrared camera



Collaborating
with



Robotic Assisted Bridge Inspection Tool (RABIT™)

- Plan to inspect about 1,000 bridges in 7 states in 5 years
- FHWA(Federal Highway Administration) promotes to produce on a large scale

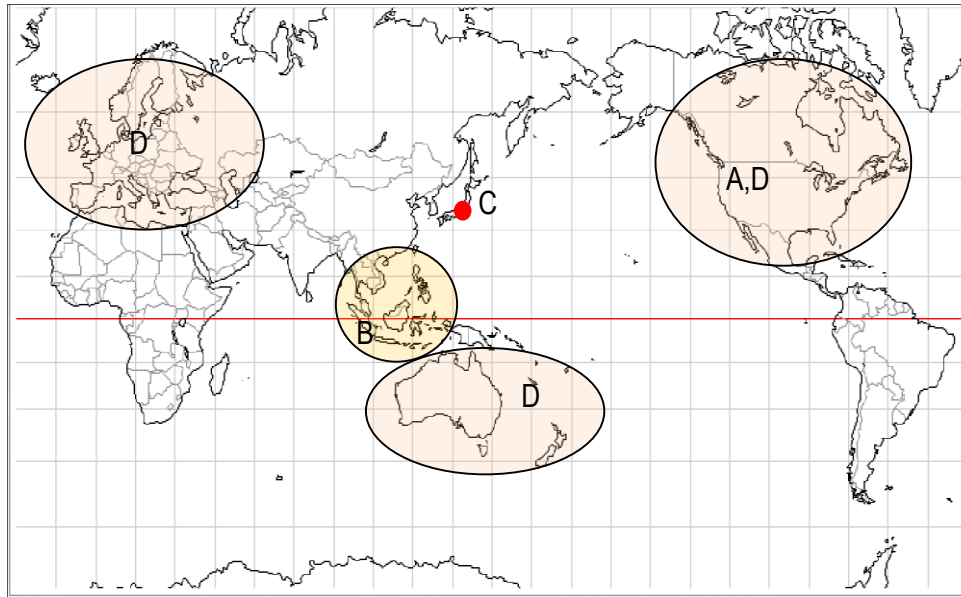
Business Fields Overseas

A) Non-Destructive Inspection Business

NEXCO-West USA, Inc., subsidiary company established in Washington DC in 2011, is extending a reach of inspection business.

B) PPP road projects in Indonesia

Representative office in Jakarta, established in 2011, participated in PPP road Project in 2014 for the first time.



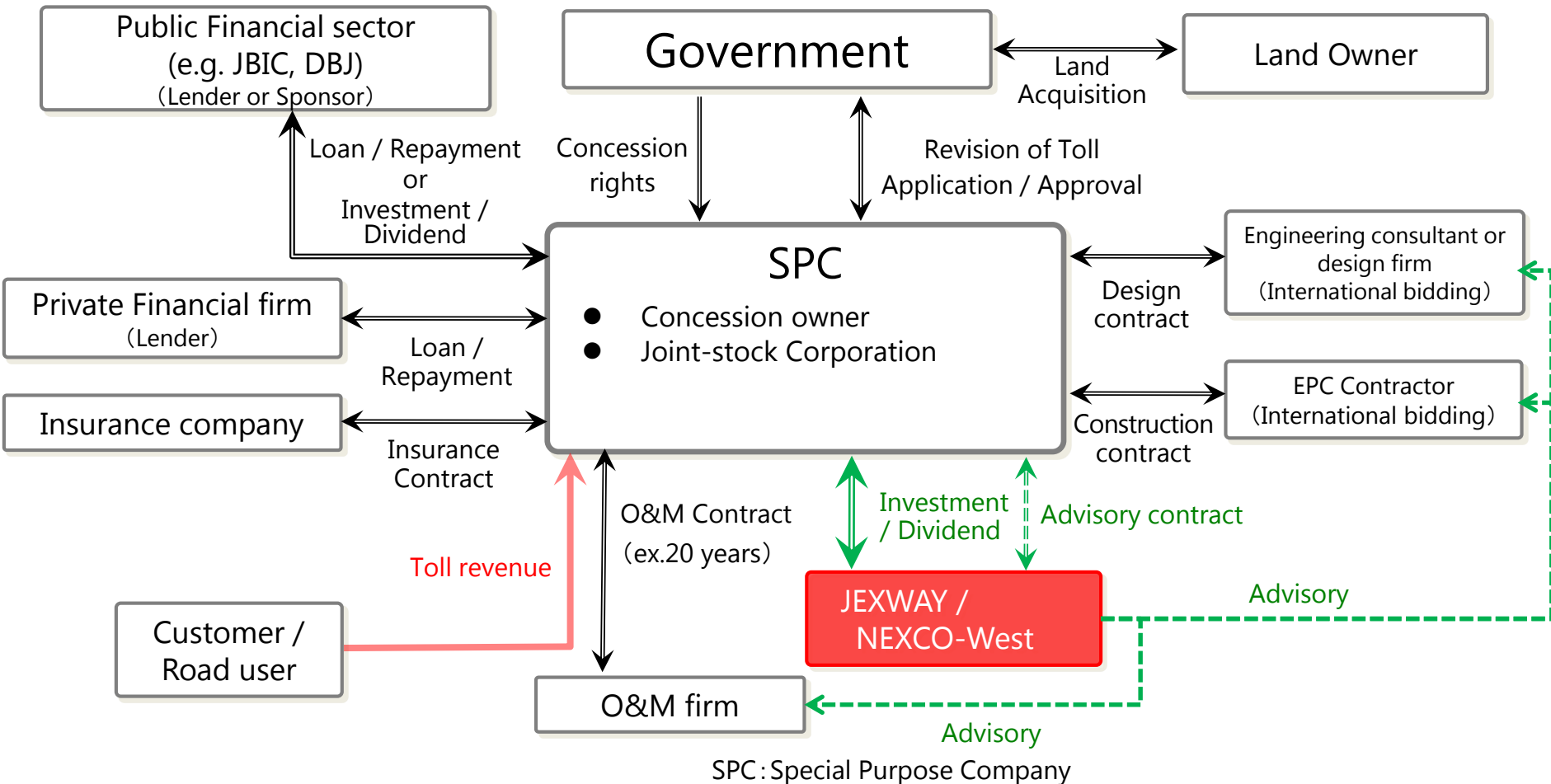
C) JEXWAY(Est. 2011)

Jexway, jointly established by 5 expressway companies in Japan, specializes in overseas road project business.

D) PPP road projects in developed countries

Questing for PPP road projects in North America, Europe and Oceania, collaborating with other Japanese companies.

Business Strategy



Ability in Consulting Services

We have conducted more than 20 projects with JICA and JBIC.

- Mainly contributed to development for Asian countries
- Highly Skilled advisory services for construction work control
- Financing with low-interest rate through JBIC fund or JICA fund



Advisory Services for
Construction Work Control
in Philippine

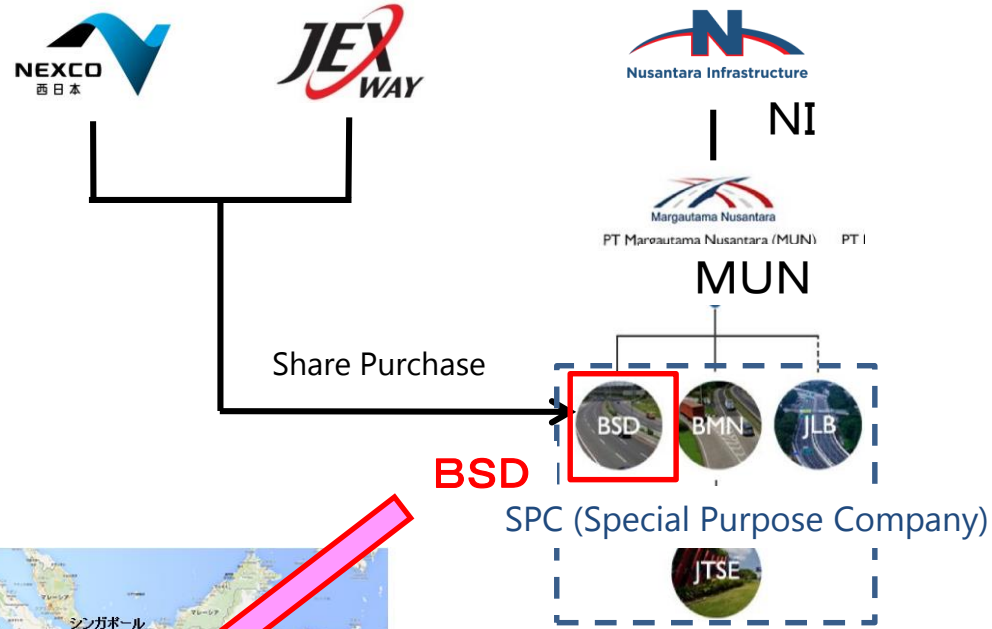


Track Records in the world

Participation in BSD Road Projects

1) PT Nusantara Infrastructure Tbk. (NI)

- Private infrastructure company
- Established in 1995
- Business field: transportation, communication, distribution networks, financial institutions and markets, and energy supply system



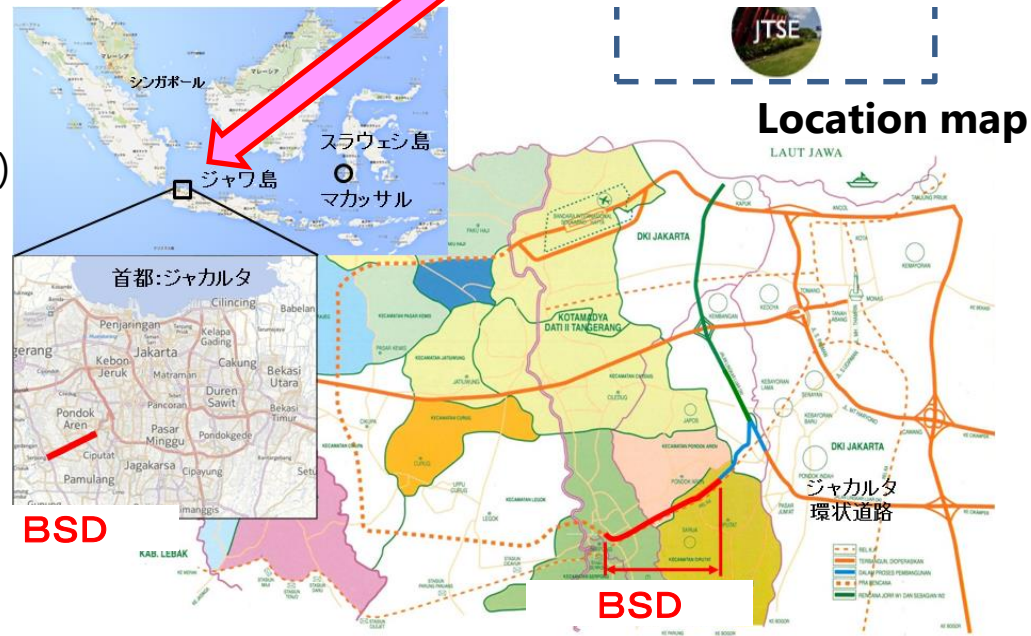
2) BSD Road Projects

Open : February 2nd 1999

Length : 7.2km

(Earthwork (fill:3.9km, cut: 3.1km),
5 bridges(0.2km), 1 IC, 1 Rest Area)

Period : Aug. 2010 ~ Oct. 2028



Location map

3) Business Participation Process :

- Jan. 2015 Share Purchase
- Aug. 2015 Technical Cooperation (Plan)